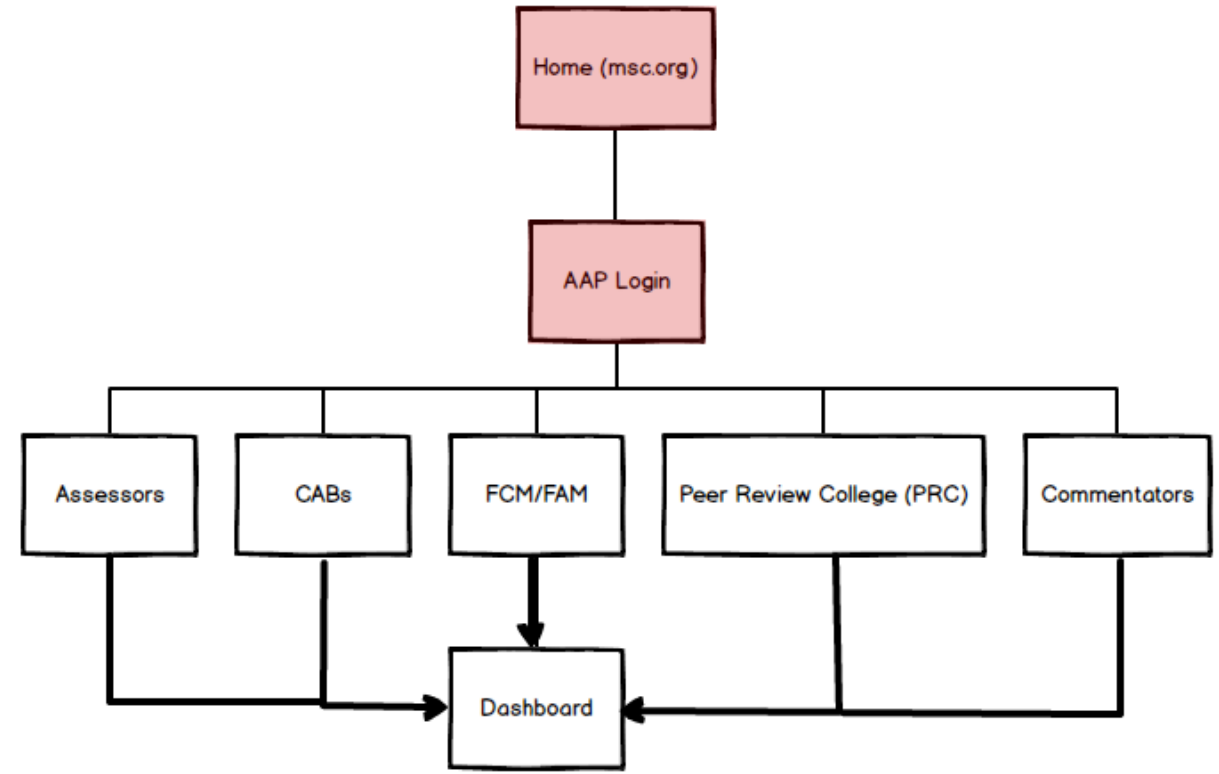
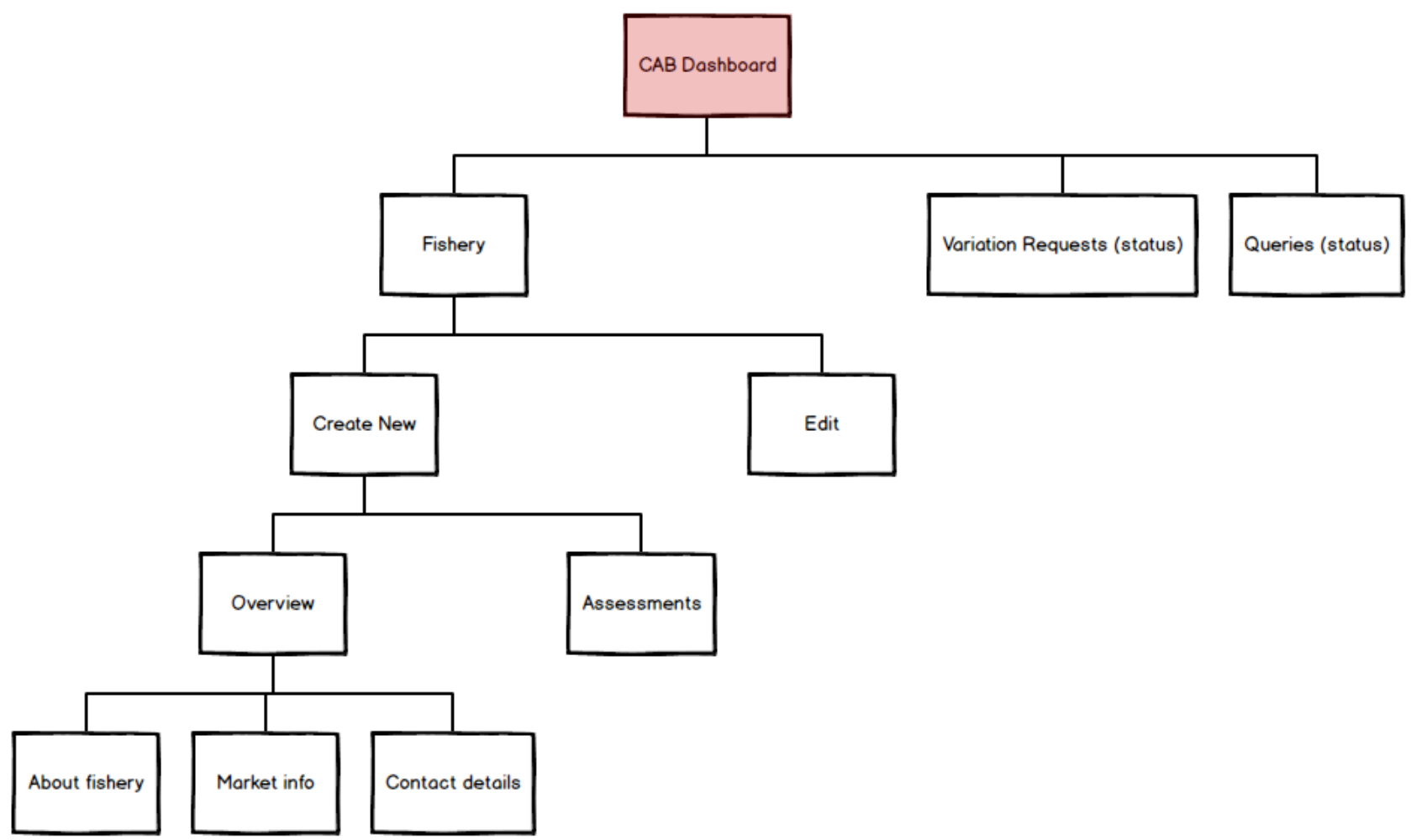


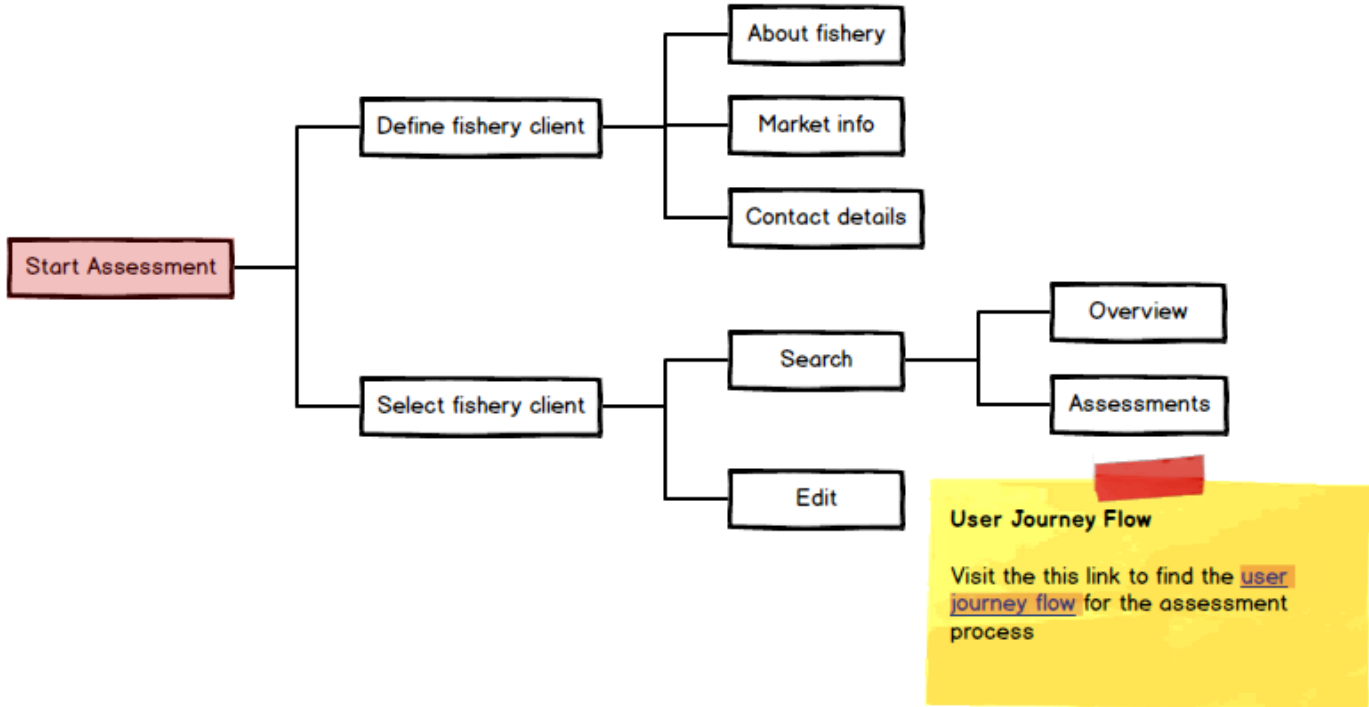
AAP Login Flow



CAB Flow



Assessment Process





Marine Stewardship Council

Media Centre

News and opinion

For teachers

MSC International -



Donate

MSC Assessment Platform [Sign in](#)

What we do

What you can do

Standards and certification

For business

About the MSC

Assessment Platform Sign In

- All users of the *assessment platform* will need to sign in
- This will require a REGISTRATION step, possibly Single Sign On (SSO)?
- Exact position of REGISTER/SIGN IN link/button tbc...

ENJOY THE SEAFOOD YOU LOVE TODAY, TOMORROW AND ALWAYS



We're on a mission to end overfishing. Ensure future generations can enjoy the wild seafood we love by choosing certified sustainable seafood with the blue fish label.

Find out more



http://msc.org/assessment-platform



Marine Stewardship Council

User name

Password

Log in

Forgotten password?

Log in gateway

There will be multiple user groups with differing levels of access and permissions (based on the user personas/actors)



Marine
Stewardship
Council

MSC Assessment Platform

Sarah CAB [Sign out X](#)

+ Add branding

ABC Marine Certification

Your dashboard

Q search

Current consultations: **56** Recently certified: **45** Recently entered assessment: **6** Total certified: **654**

Platform sidekick

Current consultations

ID	Name of fishery	Next stage	Date	Assigned to
MSC-345-6789	Guyana seabob	Surveillance Report Announcement	2 Jun 2020	Katie Morrison
MSC-123-4567	WPSTA Western and Central Pacific skipjack and yellowfin free school purse seine	Announcement Comment Draft Report	25 May 2020	Sarah Cab
MSC-678-9012	Annette Islands Reserve salmon	Surveillance Report Announcement	17 May 2020	Katie Morrison
MSC-456-7890	Russia Barents Sea opilio trap	Surveillance Report Announcement	10 Aug 2020	Sarah Cab
MSC-890-1234	ISF Iceland lumpfish	Announcement Comment Draft Report	18 Jun 2020	Katie Morrison
MSC-567-8901	Cornish hake gill net	Announcement Comment Draft Report	28 Jun 2020	Charlotte Thom
MSC-234-5678	North Sea brown shrimp	Announcement Comment Draft Report	25 Jul 2020	Sarah Cab
MSC-012-3456	Western Australia sea cucumber fishery	Surveillance Report Announcement	25 Jun 2020	Sarah Cab
MSC-901-2345	ISF Iceland lumpfish	Announcement Comment Draft Report	10 Aug 2020	Charlotte Thom
MSC-789-0123	Wash brown shrimp	Surveillance Report Announcement	25 Jul 2020	Katie Morrison

Add new fishery

MSC Correspondence

Lorem ipsum dolor sit amet, consectetur adipiscing elit, sed do eiusmod tempor incididunt ut labore et dolore magna aliqua. Ut

22 May 2020 ID: [MSC-123-4567](#)

Variation Request
Status: Draft

22 May 2020 ID: [MSC-456-7890](#)

Query...
Status: Submitted

21 May 2020 ID: [MSC-789-0123](#)

Query...
Status: Responded

19 May 2020 ID: [MSC-901-2345](#)

Variation Request
Status: Submitted

19 May 2020 ID: [MSC-234-5678](#)

Variation Request
Status: Accepted

18 May 2020 ID: [MSC-123-4567](#)

Variation Request
Status: Accepted

15 May 2020 ID: [MSC-678-9012](#)

Variation Request

CAB DASHBOARD

- Each CAB will have its own *branded* dashboard with clickable summary information for:
 - Current consultations/Recently certified/Recently entered assessment/Total certified
- Add new fishery creates 'new' record for an 'Initial Assessment' as per Fishery Dashboard but with blank details – minimal details prompted – including 'versions'
- Table of current consultations with current progress/status
- Platform sidekick - open at the default of MSC CORRESPONDENCE

All to be confirmed...



MSC Assessment Platform

Add branding 1

ABC Marine Certification

Your dashboard

Current consultations: **56** Recently certified: 4

Create new assessment ✕

Assessment ID

Name of fishery

[Create assessment](#)

Preamble to end user

Assessment ID could be autogenerated from database with sequential number..tbc

3

Current consultations

ID	Name of fishery	Surveillance	Report Announcement	Date	Person
MSC-345-6789	Guyana seabob				
MSC-123-4567	WPSTA Western and Central Pacific skipjack and yellowfin free school purse seine				
MSC-678-9012	Annette Islands Reserve salmon	Surveillance	Report Announcement	17 May 2020	Katie Morrison
MSC-456-7890	Russia Barents Sea opilio trap	Surveillance	Report Announcement	10 Aug 2020	Sarah Cab
MSC-890-1234	ISF Iceland lumpfish	Announcement	Comment Draft Report	18 Jun 2020	Katie Morrison
MSC-567-8901	Cornish hake gill net	Announcement	Comment Draft Report	28 Jun 2020	Charlotte Thom
MSC-234-5678	North Sea brown shrimp	Announcement	Comment Draft Report	25 Jul 2020	Sarah Cab
MSC-012-3456	Western Australia sea cucumber fishery	Surveillance	Report Announcement	25 Jun 2020	Sarah Cab
MSC-901-2345	ISF Iceland lumpfish	Announcement	Comment Draft Report	10 Aug 2020	Charlotte Thom
MSC-789-0123	Wash brown shrimp	Surveillance	Report Announcement	25 Jul 2020	Katie Morrison

654

Platform sidekick 4

MSC Correspondence

Lorem ipsum dolor sit amet, consectetur adipiscing elit, sed do eiusmod tempor incididunt ut labore et dolore magna aliqua. Ut

- 22 May 2020

Variation Request

Status: Draft

ID: [MSC-123-4567](#)

22 May 2020

Query...

Status: Submitted

ID: [MSC-456-7890](#)

21 May 2020

Query...

Status: Responded

ID: [MSC-789-0123](#)

19 May 2020

Variation Request

Status: Submitted

ID: [MSC-901-2345](#)

19 May 2020

Variation Request

Status: Accepted

ID: [MSC-234-5678](#)

18 May 2020

Variation Request

Status: Accepted

ID: [MSC-123-4567](#)

15 May 2020

Variation Request

ID: [MSC-678-9012](#)

CAB DASHBOARD

1. Each CAB will have its own *branded* dashboard with clickable summary information for:
 - Current consultations/Recently certified/Recently entered assessment/Total certified
2. Add new fishery creates 'new' record for an 'Initial Assessment' as per Fishery Dashboard but with blank details – minimal details prompted – including 'versions'
3. Table of current consultations with current progress/status
4. Platform sidekick - open at the default of MSC CORRESPONDENCE

All to be confirmed...



Marine Stewardship Council

MSC Assessment Platform

Sarah CAB [Sign out X](#)

Your dashboard

- <<
- Dashboard
- Fishery background +
- MSC Assessments +

ACME Western Pacific Skipjack and Tuna

ID: MSC-123-4567

Platform sidekick

[Dashboard](#) > ...

FISHERY DASHBOARD

Each fishery will have its own dashboard with clickable summary information for:

- Location
- Assessments with current progress/status
- Surveillance audits with current progress/status
- Certificates
- Chain of Custody
- Other???



Platform sidekick

This can include:

- Correspondence
- Assessment timeline/Calendar
- Notifications
- Contextual help
- Bibliography reference manager
- Glossary look up
- List of figures
- Image library
- User profile
- Sign out





Marine Stewardship Council

MSC Assessment Platform

Sarah CAB [Sign out X](#)

[Your dashboard](#)

search



ACME Western Pacific Skipjack and Tuna

ID: MSC-123-4567

Platform sidekick



- Dashboard
- Fishery background
- About this fishery
- Market information
- Contacts

MSC Assessments

Accordion style navigation

This page demonstrates the accordion style navigation (expanded and open for "Fishery background")

[Dashboard](#) > ...



- Platform sidekick**
- This can include:
- Correspondence
 - Assessment timeline/Calendar
 - Notifications
 - Contextual help
 - Bibliography reference manager
 - Glossary look up
 - List of figures
 - Image library
 - User profile
 - Sign out





Marine Stewardship Council

MSC Assessment Platform

Sarah CAB [Sign out X](#)

[Your dashboard](#)

Q search



ACME Western Pacific Skipjack and Tuna

ID: MSC-123-4567

Platform sidekick



- Dashboard
- Fishery background
- About this fishery
- Market information
- Contacts

[Dashboard](#) > ...

Assessments

Currently no assessments

[Start initial assessment](#)



About this fishery

Lorem ipsum dolor sit amet, consectetur adipisicing elit, sed do eiusmod tempor incididunt ut

[> read more..](#)

Market information

Lorem ipsum dolor sit amet, consectetur adipisicing elit, sed do eiusmod tempor incididunt ut

[> read more..](#)

Suite 4321, Tuna Towers
321 Any Street
Somewhereville Road
Honolulu
Hawaii
96701
United States of America

Fishery Background (dashboard)
(not completed during discovery)

The fishery dashboard should contain all details of a fishery including assessment history and current status...

Platform sidekick

This can include:

- Correspondence
- Assessment timeline/Calendar
- Notifications
- Contextual help
- Bibliography reference manager
- Glossary look up
- List of figures
- Image library
- User profile
- Sign out





Marine Stewardship Council

MSC Assessment Platform

Sarah CAB [Sign out X](#)

Your dashboard

» ACME Western Pacific Skipjack and Tuna

ID: MSC-123-4567

Platform sidekick

Dashboard > ...

Assessments

Currently no assessments

[Start new assessment](#)

About this fishery

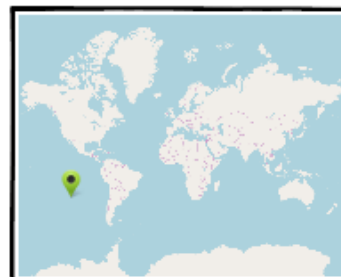
Lorem ipsum dolor sit amet, consectetur adipisicing elit, sed do eiusmod tempor incididunt ut

[> read more..](#)

Market information

Lorem ipsum dolor sit amet, consectetur adipisicing elit, sed do eiusmod tempor incididunt ut

[> read more..](#)



Suite 4321, Tuna Towers
321 Any Street
Somewhereville Road
Honolulu
Hawaii
96701
United States of America

Platform sidekick

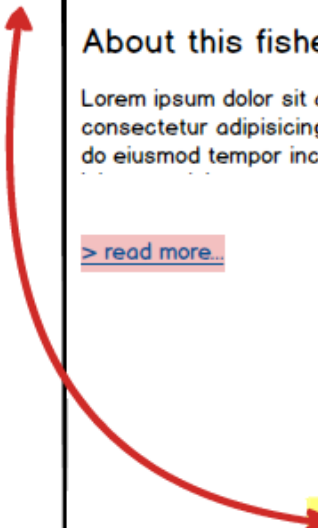
This can include:

- Correspondence
- Assessment timeline/Calendar
- Notifications
- Contextual help
- Bibliography reference manager
- Glossary look up
- List of figures
- Image library
- User profile
- Sign out

Accordion style navigation

(not completed during discovery)

This page demonstrates the accordion style navigation (collapsed and possibly just showing icons to expand sections or traffic light system)





Marine Stewardship Council

MSC Assessment Platform

Sarah CAB [Sign out X](#)

Your dashboard

- Dashboard
- Fishery background
- About this fishery
- Market information
- Contacts

MSC Assessments

ACME Western Pacific Skipjack and Tuna

ID: MSC-123-4567

Platform sidekick

[Dashboard](#) > [Overview](#) > [About](#)

About this fishery

Double-click to enter details...

Rich text editor UI

Pages 3.15 to 3.18 introduce the rich text editor (RTE) UI. Using a simple click enter to reveal RTE interface, users will be able to add text, edit, format, add images, tables etc.

Accordion style navigation

This page demonstrates the accordion style navigation (expanded and open for "Fishery background")

Platform sidekick

This can include:

- Correspondence
- Assessment timeline/Calendar
- Notifications
- Contextual help
- Bibliography reference manager
- Glossary look up
- List of figures
- Image library
- User profile
- Sign out





Marine Stewardship Council

MSC Assessment Platform

Sarah CAB [Sign out X](#)

[Your dashboard](#)

Q search



ACME Western Pacific Skipjack and Tuna

ID: MSC-123-4567

Platform sidekick



Dashboard

Fishery background

About this fishery

Market information

Contacts

[Dashboard](#) > [Overview](#) > [About](#)

About this fishery

B I U S style

Conveniently leverage other's plug-and-play ROI for front-end materials. Enthusiastically optimize optimal vortals through resource maximizing web services. Interactively iterate cutting-edge users and flexible niches.

Uniquely facilitate prospective sources whereas leading-edge customer service. Dramatically embrace timely technologies through premier products.

- Uniquely myocardinate out-of-the-box testing procedures before extensible opportunities.
- Completely pursue adaptive "outside the box" thinking through extensive e-markets.
- Progressively pursue highly efficient core competencies after quality infomediaries.
- Synergistically generate long-term high-impact supply chains for cutting-edge applications.
- Holistically iterate long-term high-impact products rather than an expanded array of e-tailers.

[Cancel](#)

[Save](#)

Platform sidekick

This can include:

- Correspondence
- Assessment timeline/Calendar
- Notifications
- Contextual help
- Bibliography reference manager
- Glossary look up
- List of figures
- Image library
- User profile
- Sign out





Marine Stewardship Council

MSC Assessment Platform

Sarah CAB [Sign out X](#)

Your dashboard

- <<
- Dashboard
- Fishery background
- About this fishery**
- Market information
- Contacts

ACME Western Pacific Skipjack and Tuna

ID: MSC-123-4567

Platform sidekick

[Dashboard](#) > [Overview](#) > [About](#)

About this fishery

Conveniently leverage other's plug-and-play ROI for front-end materials. Enthusiastically optimize optimal vortals through resource maximizing web services. Interactively iterate **cutting-edge users** and flexible niches.

Uniquely facilitate prospective sources whereas leading-edge customer service. Dramatically **embrace timely technologies** through premier products.

- Uniquely myocardinate out-of-the-box *testing procedures before extensible opportunities*.
- Completely pursue adaptive "outside the box" thinking through extensive e-markets.
- Progressively pursue highly efficient core competencies after quality infomediaries.
- Synergistically generate long-term **high-impact supply chains** for cutting-edge applications.
- Holisticly iterate long-term high-impact products rather than an *expanded array of e-tailers*.

Platform sidekick

This can include:

- Correspondence
- Assessment timeline/Calendar
- Notifications
- Contextual help
- Bibliography reference manager
- Glossary look up
- List of figures
- Image library
- User profile
- Sign out





Marine Stewardship Council

MSC Assessment Platform

Sarah CAB [Sign out X](#)

Your dashboard

- [Dashboard](#)
- [Fishery background](#)
- [About this fishery](#)
- [Market information](#)
- [Contacts](#)

ACME Western Pacific Skipjack and Tuna

ID: MSC-123-4567

Platform sidekick

[Dashboard](#) > [Overview](#) > [About](#)

About this fishery

Conveniently leverage other's plug-and-play ROI for front-end materials. Enthusiastically optimize optimal portals through resource maximizing web services. Interactively iterate cutting-edge users and flexible niches.

Uniquely facilitate prospective sources whereas lead-edge customer service. Dramatically embrace timely technologies through premier product. [Double-click to edit](#)

- Uniquely myocardinate out-of-the-box testing procedures before extensible opportunities.
- Completely pursue adaptive "outside the box" thinking through extensive e-markets.
- Progressively pursue highly efficient core competencies after quality infomediaries.
- Synergistically generate long-term high-impact supply chains for cutting-edge applications.

Platform sidekick

This can include:

- Correspondence
- Assessment timeline/Calendar
- Notifications
- Contextual help
- Bibliography reference manager
- Glossary look up
- List of figures
- Image library
- User profile
- Sign out





Marine Stewardship Council

MSC Assessment Platform

Sarah CAB [Sign out X](#)

Your dashboard



ACME Western Pacific Skipjack and Tuna

ID: MSC-123-4567

Platform sidekick




- Dashboard
- Fishery background
- About this fishery
- Market information
- Contacts

MSC Assessments

[Dashboard](#) > [Overview](#) > Market information

Market information



Double-click to enter details...

Platform sidekick

This can include:

- Correspondence
- Assessment timeline/Calendar
- Notifications
- Contextual help
- Bibliography reference manager
- Glossary look up
- List of figures
- Image library
- User profile
- Sign out





http://msc.org/assessment-platform



Marine Stewardship Council

MSC Assessment Platform

Sarah CAB [Sign out X](#)

[Your dashboard](#)

- <<
- Dashboard
- Fishery background
- About this fishery
- Market information
- Contacts

ACME Western Pacific Skipjack and Tuna

ID: MSC-123-4567

Platform sidekick

[Dashboard](#) > [Overview](#) > Fishery details

Contact details

Name of fishery

Country

Post/Zip Code

Contact details

Name

Email address

Telephone number

Platform sidekick

This can include:

- Correspondence
- Assessment timeline/Calendar
- Notifications
- Contextual help
- Bibliography reference manager
- Glossary look up
- List of figures
- Image library
- User profile
- Sign out

- >>
- Envelope icon
- Calendar icon
- Notification bell icon
- Question mark icon
- Document icon
- Table icon
- Calendar icon
- Image icon
- User profile icon
- Power icon



http://msc.org/assessment-platform



Marine Stewardship Council

MSC Assessment Platform

Sarah CAB [Sign out X](#)

Your dashboard

- <<
- Dashboard
- Fishery background
- About this fishery
- Market information
- Contacts

MSC Assessments

ACME Western Pacific Skipjack and Tuna

ID: MSC-123-4567

Platform sidekick

[Dashboard](#) > [Overview](#) > Contact details

Contact details

Name of fishery
ACME Western Pacific Skipjack and Tuna

Address
Suite 4321, Tuna Towers
321 Any Street
Somewhereville Road
Honolulu
Hawaii
96701
United States of America

Contact details

Name
--

Email address
--

Telephone number
--

Platform sidekick

This can include:

- Correspondence
- Assessment timeline/Calendar
- Notifications
- Contextual help
- Bibliography reference manager
- Glossary look up
- List of figures
- Image library
- User profile
- Sign out

>>

-
-
-
-
-
-
-
-
-
-



Marine Stewardship Council

MSC Assessment Platform

Sarah CAB [Sign out X](#)

Your dashboard

- <<
- Dashboard
- Fishery background
- MSC Assessments
- Glossary
- Executive Summary
- Assessment Team
- Peer Reviewers
- Units of Assessment
- Scope Statements
- Principle 1 - Target Species
- Background
- Scores
- Principle 2 - Ecosystem Impacts
- Background
- Scores
- Principle 3 - Management System
- Background
- Scores
- Condition Summary
- Client Action Plan Summary
- Recommendations
- Traceability & Eligibility
- Catch Data
- Surveillance Plan
- RBF Outputs
- Harmonisation
- Objections
- Appendices

ACME Western Pacific Skipjack and Tuna

ID: MSC-123-4567

Platform sidekick

STAGES	ACDR	C&PRDR	PCDR	FDR	PCR
DUE	31 May 2020	Not started	Not started	Not started	Not started

[Dashboard](#) > [Assessment](#)

Assessment

Placeholder text for the assessment content.

Preamble to end user

MSC Assessment Platform information and copyright

This document was drafted using the 'MSC Reporting Template v1.1'.
 The Marine Stewardship Council's 'MSC Reporting Template v1.1' and its content is copyright of "Marine Stewardship Council"
 © "Marine Stewardship Council" 2020. All rights reserved.

A controlled document list of MSC program documents is available on the MSC website (msc.org): -

Senior Policy Manager
 Marine Stewardship Council
 Marine House
 1 Snow Hill
 London EC1A 2DH
 United Kingdom
 Phone: + 44 (0) 20 7246 8900

Assessment landing page

The assessment landing page could contain information about the assessment process(?) and copyright details/usage rights etc

Note: content shown for demo purposes (pulled from 4-1 msc-reporting-template-v1-1 (inc ACDR,CandPRDR,PCDR,FDR,PCR).docx)

Structured Data Input

The initial idea from UX was to build the platform around the structured nature of the report, as this made logical sense and all data input required for the report output could be contained within the platform under a fishery record.

Following the structured nature of the report would allow multiple users to access the same record and work concurrently on different sections

- Platform sidekick
- This can include:
- Correspondence
 - Assessment timeline/Calendar
 - Notifications
 - Contextual help
 - Bibliography reference manager
 - Glossary look up
 - List of figures
 - Image library
 - User profile
 - Sign out





http://msc.org/assessment-platform



Marine Stewardship Council

MSC Assessment Platform

Sarah CAB [Sign out X](#)

Your dashboard



ACME Western Pacific Skipjack and Tuna

ID: MSC-123-4567

Platform sidekick



Dashboard

Fishery background

- About this fishery
- Market information
- Contacts

MSC Assessments

- Glossary
- Executive Summary
- Assessment Team
- Peer Reviewers
- Units of Assessment
- Scope Statements
- Principle 1 - Target Species
 - Background
 - Scores
- Principle 2 - Ecosystem Impacts
 - Background
 - Scores
- Principle 3 - Management System
 - Background
 - Scores
- Condition Summary
- Client Action Plan Summary
- Recommendations
- Traceability & Eligibility
- Catch Data
- Surveillance Plan
- RBF Outputs
- Harmonisation
- Objections

STAGES	ACDR	C&PRDR	PCDR	FDR	PCR
DUE	31 May 2020	Not started	Not started	Not started	Not started

[Dashboard](#) > Assessment

Assessment

Placeholder text for the assessment content, consisting of several lines of illegible characters.

Preamble to end user

MSC Assessment Platform information and copyright

This document was drafted using the 'MSC Reporting Template v1.1'.
 The Marine Stewardship Council's 'MSC Reporting Template v1.1' and its content is copyright of "Marine Stewardship Council"
 © "Marine Stewardship Council" 2020. All rights reserved.

A controlled document list of MSC program documents is available on the MSC website (msc.org): -

Senior Policy Manager
 Marine Stewardship Council
 Marine House
 1 Snow Hill
 London EC1A 2DH
 United Kingdom
 Phone: + 44 (0) 20 7246 8900

Platform sidekick

This can include:

- Correspondence
- Assessment timeline/Calendar
- Notifications
- Contextual help
- Bibliography reference manager
- Glossary look up
- List of figures
- Image library
- User profile
- Sign out





http://msc.org/assessment-platform



Marine Stewardship Council

MSC Assessment Platform

Sarah CAB [Sign out X](#)

[Your dashboard](#)

Q search

<<

ACME Western Pacific Skipjack and Tuna

ID: MSC-123-4567

Platform sidekick >>

Dashboard

Fishery background

MSC Assessments

- Glossary
- Executive Summary
- Assessment Team
- Peer Reviewers
- Units of Assessment
- Scope Statements
- Principle 1 - Target Species
 - Background
 - Scores
- Principle 2 - Ecosystem Impacts
 - Background
 - Scores
- Principle 3 - Management System
 - Background
 - Scores
- Condition Summary
- Client Action Plan Summary
- Recommendations
- Traceability & Eligibility
- Catch Data
- Surveillance Plan
- RBF Outputs
- Harmonisation
- Objections
- Appendices

STAGES	ACDR	C&PRDR	PCDR	FDR	PCR
DUE	31 May 2020	Not started	Not started	Not started	Not started

[Dashboard](#) > [Assessments](#) > [Glossary](#)

Glossary

Placeholder text for the glossary content, including a highlighted section for the "Preamble to end user".

Preamble to end user

Glossary look up

Lorem ipsum dolor sit amet, consectetur adipiscing elit, sed do eiusmod tempor incididunt ut labore et dolore magna aliqua. Ut

BLIM Search

A / B / C / D / E / F / G / H / I / J / K / L / M / N / O / P / Q / R / S / T / U / V / W / X / Y / Z

A

- ABC Acceptable Biological Catch
- ACAP Agreement on the Conservation of Albatrosses and Petrels
- ADR Alternative Dispute Resolution

B

- B Biomass
- BOF Board of Fisheries

C

Glossary look up panel
 (full UI not completed during discovery)

This could be called throughout the assessment report to assist those compiling the report to quickly insert common abbreviated terms.

It could have:

- Search lookup
- A-Z filter
- Add new term (to build knowledge base)





http://msc.org/assessment-platform



Marine Stewardship Council

MSC Assessment Platform

Sarah CAB [Sign out X](#)

Your dashboard

<<

ACME Western Pacific Skipjack and Tuna

ID: MSC-123-4567

Platform sidekick

Dashboard

STAGES	ACDR	C&PRDR	PCDR	FDR	PCR
DUE	31 May 2020	Not started	Not started	Not started	Not started

Fishery background

[Dashboard](#) > [Assessments](#) > Executive summary

MSC Assessments

Executive summary

- Glossary
- Executive Summary
- Assessment Team
- Peer Reviewers
- Units of Assessment
- Scope Statements
- Principle 1 - Target Species
 - Background
 - Scores
- Principle 2 - Ecosystem Impacts
 - Background
 - Scores
- Principle 3 - Management System
 - Background
 - Scores
- Condition Summary
- Client Action Plan Summary
- Recommendations
- Traceability & Eligibility
- Catch Data
- Surveillance Plan
- RBF Outputs
- Harmonisation
- Objections
- Appendices

Double-click to enter details...

Assessment assistance

Executive summary

- The executive summary shall include:
- Date and location of site visit.
 - The main strengths and weaknesses of the client's operation.
 - The draft determination / determination reached with supporting justification.

Reference(s): FCP v2.1 Section(s) [7.12](#), [7.18](#), [7.21](#)

Assessment assistance

This panel offers contextual and searchable assistance to users completing a particular section of a report.

It could contain clickable references to the current FCP and Standards documentation



Marine Stewardship Council

MSC Assessment Platform

Sarah CAB [Sign out X](#)

Your dashboard

- Dashboard
- Fishery background
 - About this fishery
 - Market information
 - Contacts

- MSC Assessments
- Glossary
 - Executive Summary
 - Assessment Team
 - Peer Reviewers
 - Units of Assessment
 - Scope Statements
 - Principle 1 - Target Species
 - Background
 - Scores
 - Principle 2 - Ecosystem Impacts
 - Background
 - Scores
 - Principle 3 - Management System
 - Background
 - Scores
 - Condition Summary
 - Client Action Plan Summary
 - Recommendations
 - Traceability & Eligibility
 - Catch Data
 - Surveillance Plan
 - RBF Outputs
 - Harmonisation
 - Objections

ACME Western Pacific Skipjack and Tuna

ID: MSC-123-4567

Platform sidekick

[Dashboard](#) > Assessments

Units of Assessment (UoA)

Placeholder text for the Preamble to end user section.

Preamble to end user

Units of Assessment

Species

Gear types

Location

Tonnage

Ideally, platform should utilise auto-complete lookup from database for:

- Species
- Gear
- Location

With the ability to enter multiple species/gear/location(?) onEnter...tbc

Tonnage may be auto-populated from assessment report...tbc

- Platform sidekick
- This can include:
- Correspondence
 - Assessment timeline/Calendar
 - Notifications
 - Contextual help
 - Bibliography reference manager
 - Glossary look up
 - List of figures
 - Image library
 - User profile
 - Sign out





http://msc.org/assessment-platform



Marine Stewardship Council

MSC Assessment Platform

Sarah CAB [Sign out X](#)

Your dashboard



ACME Western Pacific Skipjack and Tuna

ID: MSC-123-4567

Platform sidekick



- Dashboard

- Fishery background ⊕

- MSC Assessments ⊖
 - Glossary
 - Executive Summary
 - Assessment Team ⊕
 - Peer Reviewers ⊕
 - Units of Assessment and Certification ⊖
 - Units of Assessment
 - Units of Certification
 - Scope of assessment - in relation to enhanced or introduced fisheries
 - Scope Statements ⊕
 - Principle 1 - Target Species ⊖
 - Background ⊕
 - Scores ⊕
 - Principle 2 - Ecosystem Impacts ⊖
 - Background ⊕
 - Scores ⊕
 - Principle 3 - Management System ⊖
 - Background ⊕
 - Scores ⊕
 - Condition Summary ⊕
 - Client Action Plan Summary ⊕
 - Recommendations ⊕
 - Traceability & Eligibility ⊕
 - Catch Data ⊕
 - Surveillance Plan ⊕
 - RBF Outputs ⊕
 - Harmonisation ⊕
 - Objections ⊕
 - Appendices ⊕

[Dashboard](#) > [Assessments](#) > Units of Assessment

Units of Assessment (UoA)

Placeholder text for the UoA content area.

Preamble to end user

Add Units of Assessment (UoA)

+ Unit of Assessment

Cancel

Send for review

Assessment assistance

Search

Units of Assessment (UoA)

The report shall include a statement of the CABs determination that the fishery is within scope of the MSC Fisheries Standard. For geographical area, the CAB should include stock region, common name of the body of water (e.g. North Sea), FAO statistical area(s), and any local fisheries management area(s) (e.g. ICES divisions VI, VII and VIIIabc).

Reference(s): FCP v2.1 Section(s) [7.4](#)

-
-
-
-
-
-
-
-
-
-



MSC Assessment Platform

Home Your dashboard

Search

- Dashboard
- Fishery background
- MSC Assessments
 - Glossary
 - Executive Summary
 - Assessment Team
 - Peer Reviewers
 - Units of Assessment and Certification
 - Units of Assessment
 - Units of Certification
 - Scope of assessment - in relation to enhanced or introduced fisheries
 - Scope Statements
 - Principle 1 - Target Species
 - Background
 - Scores
 - Principle 2 - Ecosystem Impacts
 - Background
 - Scores
 - Principle 3 - Management System
 - Background
 - Scores
 - Condition Summary
 - Client Action Plan Summary
 - Recommendations
 - Traceability & Eligibility
 - Catch Data
 - Surveillance Plan
 - RBF Outputs
 - Harmonisation
 - Objections
 - Appendices

ACME Western Pacific Skipjack and Tuna

ID: MSC-123-4567

Platform sidekick

Dashboard > Assessments > Units of Assessment

Units of Assessment (UoA)

Placeholder text for the Units of Assessment section.

Preamble to end user

Add Units of Assessment (UoA)

+ Unit of Assessment

Species

Stock

Geographical area

Harvest method / gear

Client group

Other eligible fisheries

Additional notes

Cancel Add UoA

Ideally, platform should utilise auto-complete lookup from database for:
- Species
- Stock
- Geographical area(?)
- Gear
- Possibly harmonisation...?

Assessment assistance

Search

Units of Assessment (UoA)

The report shall include a statement of the CABs determination that the fishery is within scope of the MSC Fisheries Standard. For geographical area, the CAB should include stock region, common name of the body of water (e.g. North Sea), FAO statistical area(s), and any local fisheries management area(s) (e.g. ICES divisions VI, VII and VIIIabc).

Reference(s): FCP v2.1 Section(s) [7.4](#)

- Navigation icons: Home, Mail, Clock, Bell, Help, Document, Lists, Calendar, Photos, Profile, Power



Marine Stewardship Council

MSC Assessment Platform

Sarah CAB [Sign out X](#)

[Your dashboard](#)

Q search

<<

ACME Western Pacific Skipjack and Tuna

ID: MSC-123-4567

Platform sidekick >>

Dashboard

[Dashboard](#) > [Assessments](#) > Units of Assessment

Fishery background

Units of Assessment (UoA)

[Placeholder text for UoA content]



MSC Assessments

- Glossary
- Executive Summary
- Assessment Team
- Peer Reviewers
- Units of Assessment and Certification
 - Units of Assessment
 - Units of Certification
 - Scope of assessment - in relation to enhanced or introduced fisheries
- Scope Statements
- Principle 1 - Target Species
 - Background
 - Scores
- Principle 2 - Ecosystem Impacts
 - Background
 - Scores
- Principle 3 - Management System
 - Background
 - Scores
- Condition Summary
- Client Action Plan Summary
- Recommendations
- Traceability & Eligibility
- Catch Data
- Surveillance Plan
- RBF Outputs
- Harmonisation
- Objections
- Appendices

Add Units of Assessment (UoA)

+ Unit of Assessment

Species	Her_
Stock	Herring Herring Smelts
Geographical area	
Harvest method / gear	
Client group	
Other eligible fisheries	
Additional notes	

Assessment assistance

Search

Units of Assessment (UoA)

The report shall include a statement of the CABs determination that the fishery is within scope of the MSC Fisheries Standard. For geographical area, the CAB should include stock region, common name of the body of water (e.g. North Sea), FAO statistical area(s), and any local fisheries management area(s) (e.g. ICES divisions VI, VII and VIIIabc).

Reference(s): FCP v2.1 Section(s) [7.4](#)

-
-
-
-
-
-
-
-
-
-
-



MSC Assessment Platform

Sarah CAB [Sign out X](#)

Your dashboard

Search

<<

ACME Western Pacific Skipjack and Tuna

ID: MSC-123-4567

Platform sidekick

Dashboard

[Dashboard](#) > [Assessments](#) > Units of Assessment

Fishery background

Units of Assessment (UoA)

Placeholder text for the Units of Assessment section.

Preamble to end user

MSC Assessments

- Glossary
- Executive Summary
- Assessment Team
- Peer Reviewers
- Units of Assessment and Certification
 - Units of Assessment
 - Units of Certification
 - Scope of assessment - in relation to enhanced or introduced fisheries
- Scope Statements
- Principle 1 - Target Species
 - Background
 - Scores
- Principle 2 - Ecosystem Impacts
 - Background
 - Scores
- Principle 3 - Management System
 - Background
 - Scores
- Condition Summary
- Client Action Plan Summary
- Recommendations
- Traceability & Eligibility
- Catch Data
- Surveillance Plan
- RBF Outputs
- Harmonisation
- Objections
- Appendices

Add Units of Assessment (UoA)

+ Unit of Assessment

Species:

Member of shark genus? No Yes

Stock:

Geographical area:

Harvest method / gear:

Client group:

Other eligible fisheries:

Additional notes:

SHARK GENUS
Once a species has been entered, the system should be able to determine if it is a member of the shark genus and the conditional question should dynamically appear

Assessment assistance

Search

Units of Assessment (UoA)

The report shall include a statement of the CABs determination that the fishery is within scope of the MSC Fisheries Standard. For geographical area, the CAB should include stock region, common name of the body of water (e.g. North Sea), FAO statistical area(s), and any local fisheries management area(s) (e.g. ICES divisions VI, VII and VIIIabc).

Reference(s): FCP v2.1 Section(s) [7.4](#)

Navigation icons: Home, Mail, Clock, Notifications, Help, Documents, Lists, Calendar, Photos, Profile, Power



MSC Assessment Platform

[Your dashboard](#)

search



ACME Western Pacific Skipjack and Tuna

ID: MSC-123-4567

[Platform sidekick](#)

Dashboard

Fishery background

MSC Assessments

- Glossary
- Executive Summary
- Assessment Team
- Peer Reviewers
- Units of Assessment and Certification
 - Units of Assessment
 - Units of Certification
 - Scope of assessment - in relation to enhanced or introduced fisheries
- Scope Statements
- Principle 1 - Target Species
 - Background
 - Scores
- Principle 2 - Ecosystem Impacts
 - Background
 - Scores
- Principle 3 - Management System
 - Background
 - Scores
- Condition Summary
- Client Action Plan Summary
- Recommendations
- Traceability & Eligibility
- Catch Data
- Surveillance Plan
- RBF Outputs
- Harmonisation
- Objections
- Appendices

[Dashboard](#) > [Assessments](#) > Units of Assessment

Units of Assessment (UoA)

Placeholder text for the Units of Assessment section.



Add Units of Assessment (UoA)

+ Unit of Assessment

Species

Member of shark genus? No Yes

Stock

Geographical area

Harvest method / gear

Client group

Other eligible fisheries

Additional notes

Assessment assistance

Search

Units of Assessment (UoA)

The report shall include a statement of the CABs determination that the fishery is within scope of the MSC Fisheries Standard. For geographical area, the CAB should include stock region, common name of the body of water (e.g. North Sea), FAO statistical area(s), and any local fisheries management area(s) (e.g. ICES divisions VI, VII and VIIIabc).

Reference(s): FCP v2.1 Section(s) [7.4](#)





MSC Assessment Platform

Sarah CAB [Sign out X](#)

Your dashboard

Search

<< ACME Western Pacific Skipjack and Tuna ID: MSC-123-4567 Platform sidekick >>

- Dashboard
- Fishery background
- MSC Assessments
 - Glossary
 - Executive Summary
 - Assessment Team
 - Peer Reviewers
 - Units of Assessment and Certification
 - Units of Assessment
 - Units of Certification
 - Scope of assessment - in relation to enhanced or introduced fisheries
 - Scope Statements
 - Principle 1 - Target Species
 - Background
 - Scores
 - Principle 2 - Ecosystem Impacts
 - Background
 - Scores
 - Principle 3 - Management System
 - Background
 - Scores
 - Condition Summary
 - Client Action Plan Summary
 - Recommendations
 - Traceability & Eligibility
 - Catch Data
 - Surveillance Plan
 - RBF Outputs
 - Harmonisation
 - Objections
 - Appendices

Dashboard > Assessments > Units of Assessment

Units of Assessment (UoA)

[Placeholder text for the UoA list]

Preamble to end user

Add Units of Assessment (UoA)

+ Unit of Assessment

Species:

Member of shark genus? No Yes

Stock:

Geographical area:

Low trophic? No Yes

Harvest method / gear:

Client group:

Other eligible fisheries:

Additional notes:

LOW TROPIC

Once a species, stock and geographical area have been entered, the system should be able to provisionally determine if the species is low trophic or not.

The CAN can add notes to support this and the assessor can override this provisional determination once adding background/scoring for any UoA

Assessment assistance

Search

Units of Assessment (UoA)

The report shall include a statement of the CABs determination that the fishery is within scope of the MSC Fisheries Standard. For geographical area, the CAB should include stock region, common name of the body of water (e.g. North Sea), FAO statistical area(s), and any local fisheries management area(s) (e.g. ICES divisions VI, VII and VIIIabc).

Reference(s): FCP v2.1 Section(s) [7.4](#)

Platform sidekick navigation icons: Home, Mail, Clock, Notifications, Help, Documents, Lists, Calendar, Photos, Profile, Power.



http://msc.org/assessment-platform



Marine Stewardship Council

MSC Assessment Platform

Sarah CAB [Sign out X](#)

Your dashboard

- <<
- Dashboard
- Fishery background
- MSC Assessments
 - Glossary
 - Executive Summary
 - Assessment Team
 - Peer Reviewers
 - Units of Assessment and Certification
 - Units of Assessment
 - Units of Certification
 - Scope of assessment - in relation to enhanced or introduced fisheries
 - Scope Statements
 - Principle 1 - Target Species
 - Background
 - Scores
 - Principle 2 - Ecosystem Impacts
 - Background
 - Scores
 - Principle 3 - Management System
 - Background
 - Scores
 - Condition Summary
 - Client Action Plan Summary
 - Recommendations
 - Traceability & Eligibility
 - Catch Data
 - Surveillance Plan
 - RBF Outputs
 - Harmonisation
 - Objections
 - Appendices

ACME Western Pacific Skipjack and Tuna

ID: MSC-123-4567

Platform sidekick

[Dashboard](#) > [Assessments](#) > Units of Assessment

Units of Assessment (UoA)

Placeholder text for the UoA description. A yellow sticky note is placed over this area with the text: "Preamble to end user".

Add Units of Assessment (UoA)

+ Unit of Assessment

UoA 01 - Herring			
	Species Herring	Geographical area Baltic Sea	
	Shark genus No	Harvest method / gear Demersal Trawl	
	Stock Baltic	Client group ACME Fisheries	
	Low trophic? No	Other eligible fisheries None	
	Additional notes <i>Notes and hints from CAB for assessors on each UoA can be written here</i>		

[duplicate UoA?](#)

Cancel

Send for review

Assessment assistance

Units of Assessment (UoA)

The report shall include a statement of the CABs determination that the fishery is within scope of the MSC Fisheries Standard. For geographical area, the CAB should include stock region, common name of the body of water (e.g. North Sea), FAO statistical area(s), and any local fisheries management area(s) (e.g. ICES divisions VI, VII and VIIIabc).

Reference(s): FCP v2.1 Section(s) [7.4](#)

UoA component

The UoA component can contain functions such as:

- reorder handle (to drag and drop the order of multiple UoAs)
- edit UoA
- Minimise UoA (usefull when there may be multiple UoAs present)
- contain a "duplicate UoA" function to allow users to quickly create multiple UoAs

- >>
-
-
-
-
-
-
-
-
-



http://msc.org/assessment-platform

Sarah CAB [Sign out X](#)



MSC Assessment Platform

[Your dashboard](#)

Q search

<<

ACME Western Pacific Skipjack and Tuna

ID: MSC-123-4567

Platform sidekick >>

Dashboard

[Dashboard](#) > [Assessments](#) > Units of Assessment

Fishery background

Units of Assessment (UoA)

Placeholder text for UoA description


Preamble to end user

MSC Assessments

- Glossary
- Executive Summary
- Assessment Team
- Peer Reviewers
- Units of Assessment and Certification
 - Units of Assessment
 - Units of Certification
 - Scope of assessment - in relation to enhanced or introduced fisheries
- Scope Statements
- Principle 1 - Target Species
 - Background
 - Scores
- Principle 2 - Ecosystem Impacts
 - Background
 - Scores
- Principle 3 - Management System
 - Background
 - Scores
- Condition Summary
- Client Action Plan Summary
- Recommendations
- Traceability & Eligibility
- Catch Data
- Surveillance Plan
- RBF Outputs
- Harmonisation
- Objections
- Appendices

Add Units of Assessment (UoA)

UoA 01 - Herring



Stock: Baltic Client group: ACME Fisheries

Low trophic?: No Other eligible fisheries: None

Additional notes: Notes and hints from CAB for assessors on each UoA can be written here

Duplicate UoA

Are you sure you want to duplicate this UoA?

Assessment assistance

Search

Units of Assessment (UoA)

The report shall include a statement of the CABs determination that the fishery is within scope of the MSC Fisheries Standard. For geographical area, the CAB should include stock region, common name of the body of water (e.g. North Sea), FAO statistical area(s), and any local fisheries management area(s) (e.g. ICES divisions VI, VII and VIIIabc).

Reference(s): FCP v2.1 Section(s) [7.4](#)

-
-
-
-
-
-
-
-
-
-



Dashboard

Fishery background

MSC Assessments

- Glossary
- Executive Summary
- Assessment Team
- Peer Reviewers
- Units of Assessment and Certification
 - Units of Assessment
 - Units of Certification
 - Scope of assessment - in relation to enhanced or introduced fisheries
- Scope Statements
 - Principle 1 - Target Species
 - Background
 - Scores
 - Principle 2 - Ecosystem Impacts
 - Background
 - Scores
 - Principle 3 - Management System
 - Background
 - Scores
- Condition Summary
- Client Action Plan Summary
- Recommendations
- Traceability & Eligibility
- Catch Data
- Surveillance Plan
- RBF Outputs
- Harmonisation
- Objections
- Appendices

[Dashboard](#) > [Assessments](#) > Units of Assessment

Units of Assessment (UoA)

[Placeholder text for the UoA page]

Preamble to
end user

Add Units of Assessment (UoA)

**** This is a duplicate, please amend fields where necessary ****

+ Unit of Assessment

Species	<input type="text" value="Herring"/>
Member of shark genus?	<input checked="" type="radio"/> No <input type="radio"/> Yes
Stock	<input type="text" value="North Sea"/>
Geographical area	<input type="text" value="North Sea"/>
Low trophic?	<input checked="" type="radio"/> No <input type="radio"/> Yes
Harvest method / gear	<input type="text" value="Demersal Trawl"/>
Client group	<input type="text" value="ACME Fisheries"/>
Other eligible fisheries	<input type="text" value="None"/>
Additional notes	<input type="text" value="Notes and hints from CAB for assessors on each UoA can be written here"/>
<input type="button" value="Cancel"/> <input type="button" value="Add UoA"/>	

UoA 01 - Herring



Species	Herring	Geographical area	Baltic Sea
Shark genus	No	Harvest method / gear	Demersal Trawl
Stock	Baltic	Client group	ACME Fisheries
Low trophic?	No	Other eligible fisheries	None
Additional notes	Notes and hints from CAB for assessors on each UoA can be written here		

duplicate UoA?

Assessment assistance

 Search

Units of Assessment (UoA)

The report shall include a statement of the CABs determination that the fishery is within scope of the MSC Fisheries Standard. For geographical area, the CAB should include stock region, common name of the body of water (e.g. North Sea), FAO statistical area(s), and any local fisheries management area(s) (e.g. ICES divisions VI, VII and VIIIabc).

Reference(s): FCP v2.1 Section(s) [7.4](#)





Marine Stewardship Council

MSC Assessment Platform

Sarah CAB [Sign out X](#)

Your dashboard



ACME Western Pacific Skipjack and Tuna

ID: MSC-123-4567

Platform sidekick



Dashboard

Fishery background

MSC Assessments

- Glossary
- Executive Summary
- Assessment Team
- Peer Reviewers
- Units of Assessment and Certification
 - Units of Assessment
 - Units of Certification
 - Scope of assessment - in relation to enhanced or introduced fisheries
- Scope Statements
- Principle 1 - Target Species
 - Background
 - Scores
- Principle 2 - Ecosystem Impacts
 - Background
 - Scores
- Principle 3 - Management System
 - Background
 - Scores
- Condition Summary
- Client Action Plan Summary
- Recommendations
- Traceability & Eligibility
- Catch Data
- Surveillance Plan
- RBF Outputs
- Harmonisation
- Objections
- Appendices

[Dashboard](#) > [Assessments](#) > Units of Assessment

Units of Assessment (UoA)

Placeholder text for the UoA section.



Add Units of Assessment (UoA)

UoA 01 - Herring

	Species	Herring	Geographical area	Baltic Sea
	Shark genus	No	Harvest method / gear	Demersal Trawl
	Stock	Baltic	Client group	ACME Fisheries
	Low trophic?	No	Other eligible fisheries	None
Additional notes		Notes and hints from CAB for assessors on each UoA can be written here		

[duplicate UoA?](#)

UoA 02 - Herring

	Species	Herring	Geographical area	North Sea
	Shark genus	No	Harvest method / gear	Demersal Trawl
	Stock	North Sea	Client group	ACME Fisheries
	Low trophic?	No	Other eligible fisheries	None
Additional notes		Notes and hints from CAB for assessors on each UoA can be written here		

[duplicate UoA?](#)

Assessment assistance

Units of Assessment (UoA)

The report shall include a statement of the CABs determination that the fishery is within scope of the MSC Fisheries Standard. For geographical area, the CAB should include stock region, common name of the body of water (e.g. North Sea), FAO statistical area(s), and any local fisheries management area(s) (e.g. ICES divisions VI, VII and VIIIabc).

Reference(s): FCP v2.1 Section(s) [7.4](#)





MSC Assessment Platform

Your dashboard

search

<<

ACME Western Pacific Skipjack and Tuna

ID: MSC-123-4567

Platform sidekick

Dashboard

Dashboard > Assessments > Units of Assessment

Fishery background

Units of Assessment (UoA)

MSC Assessments

- Glossary
- Executive Summary
- Assessment Team
- Peer Reviewers
- Units of Assessment and Certification
 - Units of Assessment
 - Units of Certification
 - Scope of assessment - in relation to enhanced or introduced fisheries
- Scope Statements
- Principle 1 - Target Species
 - Background
 - Scores
- Principle 2 - Ecosystem Impacts
 - Background
 - Scores
- Principle 3 - Management System
 - Background
 - Scores
- Condition Summary
- Client Action Plan Summary
- Recommendations
- Traceability & Eligibility
- Catch Data
- Surveillance Plan
- RBF Outputs
- Harmonisation
- Objections
- Appendices

[Placeholder text for UoA content]

Preamble to end user

Add Units of Assessment (UoA)

+ Unit of Assessment

UoA 01 - Herring

	Species	Herring	Geographical area	Baltic Sea
	Shark genus	No	Harvest method / gear	Demersal Trawl
	Stock	Baltic	Client group	ACME Fisheries
	Low trophic?	No	Other eligible fisheries	None
Additional notes <i>Notes and hints from CAB for assessors on each UoA can be written here</i>				

duplicate UoA?

UoA 02 - Herring

	Species	Herring	Geographical area	North Sea
	Shark genus	No	Harvest method / gear	Demersal Trawl
	Stock	North Sea	Client group	ACME Fisheries
	Low trophic?	No	Other eligible fisheries	None
Additional notes <i>Notes and hints from CAB for assessors on each UoA can be written here</i>				

duplicate UoA?

UoA 03 - Mackerel

	Species	Mackerel	Geographical area	Baltic Sea
	Shark genus	No	Harvest method / gear	Demersal Trawl
	Stock	Baltic	Client group	ACME Fisheries
	Low trophic?	No	Other eligible fisheries	None
Additional notes <i>Notes and hints from CAB for assessors on each UoA can be written here</i>				

duplicate UoA?

UoA 04 - Mackerel

	Species	Mackerel	Geographical area	North Sea
	Shark genus	No	Harvest method / gear	Demersal Trawl
	Stock	North Sea	Client group	ACME Fisheries
	Low trophic?	No	Other eligible fisheries	None
Additional notes <i>Notes and hints from CAB for assessors on each UoA can be written here</i>				

duplicate UoA?

UoA 05 - Sprat

	Species	Sprat	Geographical area	North Sea
	Shark genus	No	Harvest method / gear	Demersal Trawl
	Stock	Non-specific	Client group	ACME Fisheries
	Low trophic?	No	Other eligible fisheries	None
Additional notes <i>Notes and hints from CAB for assessors on each UoA can be written here</i>				

duplicate UoA?

Assessment assistance

Search

Units of Assessment (UoA)

The report shall include a statement of the CABs determination that the fishery is within scope of the MSC Fisheries Standard. For geographical area, the CAB should include stock region, common name of the body of water (e.g North Sea), FAO statistical area(s), and any local fisheries management area(s) (e.g. ICES divisions VI, VII and VIIIabc).

Reference(s): FCP v2.1 Section(s) [7.4](#)

- >>
- ✉
- 🕒
- 🔔
- ?
- 📄
- ☰
- 🗓️
- 🖼️
- 👤
- 🔌



http://msc.org/assessment-platform



Marine Stewardship Council

MSC Assessment Platform

George Assessor [Sign out X](#)

Your dashboard

Current consultations				
ID	Name of fishery	Next stage	Date	Assigned to
MSC-345-6789	Guyana seabob	Surveillance Report Announcement	2 Jun 2020	Katie Morrison
MSC-123-4567	WPSTA Western and Central Pacific skipjack and yellowfin free school purse seine	Announcement Comment Draft Report	25 May 2020	Sarah Cab
MSC-678-9012	Annette Islands Reserve salmon	Surveillance Report Announcement	17 May 2020	Katie Morrison

Assessor DASHBOARD
 (not completed during discovery)
 This is the basics for an assessor dashboard, there is lots of scope for discussion

Platform sidekick

MSC Correspondence
 Lorem ipsum dolor sit amet, consectetur adipiscing elit, sed do eiusmod tempor incididunt ut labore et dolore magna aliqua. Ut
 22 May 2020 ID: [MSC-123-4567](#)
Variation Request
 Status: Draft





Marine Stewardship Council

MSC Assessment Platform

George Assessor [Sign out X](#)

Your dashboard

<< ACME Western Pacific Skipjack and Tuna ID: MSC-123-4567 Platform sidekick >>

Dashboard

Fishery background

MSC Assessments

- Glossary
- Executive Summary
- Assessment Team
- Peer Reviewers
- Units of Assessment
- Scope Statements
- Principle 1 - Target Species
 - Background
 - Scores
- Principle 2 - Ecosystem Impacts
 - Background
 - Scores
- Principle 3 - Management System
 - Background
 - Scores
- Condition Summary
- Client Action Plan Summary
- Recommendations
- Traceability & Eligibility
- Catch Data
- Surveillance Plan
- RBF Outputs
- Harmonisation
- Objections
- Appendices

STAGES	ACDR	C&PRDR	PCDR	FDR	PCR
DUE	31 May 2020	Not started	Not started	Not started	Not started

[Dashboard](#) > [Assessments](#) > [Principle 1](#) > Background

Principle 1 - Target Species

Background

UoA 01 Herring <i>Baltic Herring</i>	UoA 02 Herring <i>North Sea Herring</i>	UoA 03 Mackerel <i>Baltic Mackerel</i>	UoA 04 Mackerel <i>North Sea Mackerel</i>	UoA 05 Sprat <i>Non-specific sprat</i>
---	--	---	--	---

Principles Background and Scoring

Wireframes 4.4.1 to 4.5.6

The principles will be populated from the UoAs and will provide the basic tree structure for assessors to edit and work through.

There is a long way to go with this process but these wireframes can certainly be used as the basis for deeper discussions

Assessment assistance

Principle 1 background

The report shall include a summary of the fishery based on the topics below, referencing electronic or other documents used:

- An outline of the fishery resources including life histories as appropriate.
- An outline of status of stocks as indicated by stock assessments, including a description of the assessment methods, standards, and stock indicators, biological limits, etc.
- Information on the seasonal operation of the fishery.
- A brief history of fishing and management.

Any information used as supporting rationale should be provided in the scoring tables.

The report shall indicate whether the target species is key Low-Trophic Level (LTL). If there are multiple Principle 1 species, the report shall indicate which are key LTL.

Reference(s): [FCP v2.1 Annex PA](#), [Fisheries Standard v2.01](#)

-
-
-
-
-
-
-
-
-
-



MSC Assessment Platform

[Your dashboard](#)

Q search



ACME Western Pacific Skipjack and Tuna

ID: MSC-123-4567

Platform sidekick

Dashboard

Fishery background

MSC Assessments

- Glossary
- Executive Summary
- Assessment Team
- Peer Reviewers
- Units of Assessment
- Scope Statements
- Principle 1 - Target Species
 - Background
 - UoA 1 - Herring
 - UoA 2 - Herring
 - UoA 3 - Mackerel
 - UoA 4 - Mackerel
 - UoA 5 - Sprat
 - Scores
- Principle 2 - Ecosystem Impacts
 - Background
 - Scores
- Principle 3 - Management System
 - Background
 - Scores
- Condition Summary
- Client Action Plan Summary
- Recommendations
- Traceability & Eligibility
- Catch Data
- Surveillance Plan
- RBF Outputs
- Harmonisation
- Objections


STAGES	ACDR	C&PRDR	PCDR	FDR	PCR
DUE	31 May 2020	Not started	Not started	Not started	Not started

[Dashboard](#) > [Assessments](#) > [Principle 1](#) > Background

Principle 1 - Target Species

Background

UoA 01 Herring <i>Baltic Herring</i>	UoA 02 Herring <i>North Sea Herring</i>	UoA 03 Mackerel <i>Baltic Mackerel</i>	UoA 04 Mackerel <i>North Sea Mackerel</i>	UoA 05 Sprat <i>Non-specific sprat</i>
--	---	--	---	--

UoA 01 - Herring																					
	<table border="0"> <tr> <td>Species</td> <td>Herring</td> <td>Geographical area</td> <td>Baltic Sea</td> </tr> <tr> <td>Shark genus</td> <td>No</td> <td>Harvest method / gear</td> <td>Demersal Trawl</td> </tr> <tr> <td>Stock</td> <td>Baltic</td> <td>Client group</td> <td>ACME Fisheries</td> </tr> <tr> <td>Low trophic?</td> <td>No</td> <td>Other eligible fisheries</td> <td>None</td> </tr> <tr> <td>Additional notes</td> <td colspan="3"><i>Notes and hints from CAB for assessors on each UoA can be written here</i></td> </tr> </table>	Species	Herring	Geographical area	Baltic Sea	Shark genus	No	Harvest method / gear	Demersal Trawl	Stock	Baltic	Client group	ACME Fisheries	Low trophic?	No	Other eligible fisheries	None	Additional notes	<i>Notes and hints from CAB for assessors on each UoA can be written here</i>		
Species	Herring	Geographical area	Baltic Sea																		
Shark genus	No	Harvest method / gear	Demersal Trawl																		
Stock	Baltic	Client group	ACME Fisheries																		
Low trophic?	No	Other eligible fisheries	None																		
Additional notes	<i>Notes and hints from CAB for assessors on each UoA can be written here</i>																				

+
Double-click to enter details...

Assessment assistance

Search

Principle 1 background

The report shall include a summary of the fishery based on the topics below, referencing electronic or other documents used:

- An outline of the fishery resources including life histories as appropriate.
- An outline of status of stocks as indicated by stock assessments, including a description of the assessment methods, standards, and stock indicators, biological limits, etc.
- Information on the seasonal operation of the fishery.
- A brief history of fishing and management.

Any information used as supporting rationale should be provided in the scoring tables.

The report shall indicate whether the target species is key Low-Trophic Level (LTL). If there are multiple Principle 1 species, the report shall indicate which are key LTL.

Reference(s): [FCP v2.1 Annex PA](#), [Fisheries Standard v2.01](#)





MSC Assessment Platform

George Assessor [Sign out X](#)

[Your dashboard](#)

<<

ACME Western Pacific Skipjack and Tuna

ID: MSC-123-4567

Platform sidekick

Dashboard

Fishery background

MSC Assessments

- Glossary
- Executive Summary
- Assessment Team
- Peer Reviewers
- Units of Assessment
- Scope Statements
- Principle 1 - Target Species
 - Background
 - UoA 1 - Herring
 - UoA 2 - Herring
 - UoA 3 - Mackerel
 - UoA 4 - Mackerel
 - UoA 5 - Sprat
 - Scores
- Principle 2 - Ecosystem Impacts
 - Background
 - Scores
- Principle 3 - Management System
 - Background
 - Scores
- Condition Summary
- Client Action Plan Summary
- Recommendations
- Traceability & Eligibility
- Catch Data
- Surveillance Plan
- RBF Outputs
- Harmonisation
- Objections
- Appendices

STAGES	ACDR	C&PRDR	PCDR	FDR	PCR
DUE	31 May 2020	Not started	Not started	Not started	Not started

[Dashboard](#) > [Assessments](#) > [Principle 1](#) > Background

Principle 1 - Target Species

Background

UoA 01 Herring <i>Baltic Herring</i>	UoA 02 Herring <i>North Sea Herring</i>	UoA 03 Mackerel <i>Baltic Mackerel</i>	UoA 04 Mackerel <i>North Sea Mackerel</i>	UoA 05 Sprat <i>Non-specific sprat</i>
--	---	--	---	--

UoA 01 - Herring



Species	Herring	Geographical area	Baltic Sea
Shark genus	No	Harvest method / gear	Demersal Trawl
Stock	Baltic	Client group	ACME Fisheries
Low trophic?	No	Other eligible fisheries	None
Additional notes	<i>Notes and hints from CAB for assessors on each UoA can be written here</i>		

B I U S style

Continually unleash efficient testing procedures rather than distinctive experiences. Quickly maximize seamless schemas vis-a-vis compelling architectures. Credibly visualize leading-edge bandwidth through effective manufactured products. Credibly implement standardized e-commerce without interoperable materials. Proactively fashion distinctive initiatives with covalent architectures.

- Competently integrate innovative solutions without state of the art technologies. Holisticly coordinate multimedia based e-markets with synergistic scenarios. Globally develop ethical potentialities rather than efficient content. Dramatically iterate ubiquitous meta-services with bricks-and-clicks testing procedures. Dynamically create customized resources with open-source solutions.
- Globally drive accurate networks for cross functional value. Efficiently deliver.

Monotonectally myocardinate corporate platforms through exceptional leadership skills. Phosfluorescently whiteboard wireless action items whereas impactful solutions. Continually streamline holistic catalysts for change through parallel data. Synergistically reconceptualize client-focused leadership without an expanded array of outsourcing. Holisticly whiteboard prospective process improvements through out-of-

Assessment assistance

Principle 1 background

The report shall include a summary of the fishery based on the topics below, referencing electronic or other documents used:

- An outline of the fishery resources including life histories as appropriate.
- An outline of status of stocks as indicated by stock assessments, including a description of the assessment methods, standards, and stock indicators, biological limits, etc.
- Information on the seasonal operation of the fishery.
- A brief history of fishing and management.

Any information used as supporting rationale should be provided in the scoring tables.

The report shall indicate whether the target species is key Low-Trophic Level (LTL). If there are multiple Principle 1 species, the report shall indicate which are key LTL.

Reference(s): [FCP v2.1 Annex PA, Fisheries Standard v2.01](#)





Marine Stewardship Council

MSC Assessment Platform

George Assessor [Sign out X](#)

[Your dashboard](#)

<<

ACME Western Pacific Skipjack and Tuna

ID: MSC-123-4567

Platform sidekick

Dashboard

Fishery background

MSC Assessments

- Glossary
- Executive Summary
- Assessment Team
- Peer Reviewers
- Units of Assessment
- Scope Statements
- Principle 1 - Target Species
 - Background
 - UoA 1 - Herring
 - UoA 2 - Herring
 - UoA 3 - Mackerel
 - UoA 4 - Mackerel
 - UoA 5 - Sprat
- Scores
- Principle 2 - Ecosystem Impacts
 - Background
 - Scores
- Principle 3 - Management System
 - Background
 - Scores
- Condition Summary
- Client Action Plan Summary
- Recommendations
- Traceability & Eligibility
- Catch Data
- Surveillance Plan
- RBF Outputs
- Harmonisation
- Objections
- Appendices

STAGES	ACDR	C&PRDR	PCDR	FDR	PCR
DUE	31 May 2020	Not started	Not started	Not started	Not started


[Dashboard](#) > [Assessments](#) > [Principle 1](#) > Background

Principle 1 - Target Species

Background

UoA 01 Herring <i>Baltic Herring</i>	UoA 02 Herring <i>North Sea Herring</i>	UoA 03 Mackerel <i>Baltic Mackerel</i>	UoA 04 Mackerel <i>North Sea Mackerel</i>	UoA 05 Sprat <i>Non-specific sprat</i>
--	---	--	---	--

UoA 01 - Herring



Species	Herring	Geographical area	Baltic Sea
Shark genus	No	Harvest method / gear	Demersal Trawl
Stock	Baltic	Client group	ACME Fisheries
Low trophic?	No	Other eligible fisheries	None
Additional notes	<i>Notes and hints from CAB for assessors on each UoA can be written here</i>		

Continually unleash efficient testing procedures rather than distinctive experiences. Quickly maximize seamless schemas vis-a-vis compelling architectures. Credibly visualize leading-edge bandwidth through effective manufactured products. Credibly implement standardized e-commerce without interoperable materials. Proactively fashion distinctive initiatives with covalent architectures.

- Competently integrate innovative solutions without state of the art technologies. Holistically coordinate multimedia based e-markets with synergistic scenarios. Globally develop ethical potentialities rather than efficient content. Dramatically iterate ubiquitous meta-services with bricks-and-clicks testing procedures. Dynamically create customized resources with open-source solutions.
- Globally drive accurate networks for cross functional value. Efficiently deliver.

Monotonectally myocardinate corporate platforms through exceptional leadership skills. Phosfluorescently whiteboard wireless action items whereas impactful solutions. Continually streamline holistic catalysts for change through parallel data. Synergistically reconceptualize client-focused leadership without an expanded array of outsourcing. Holistically whiteboard prospective process improvements through out-of-the-box benefits.

Dramatically procrastinate seamless ROI without exceptional e-tailers. Credibly maintain user friendly channels after prospective action items. Authoritatively matrix ubiquitous solutions vis-a-vis cost effective value. Monotonectally orchestrate parallel convergence rather than collaborative leadership. Dramatically whiteboard diverse processes vis-a-vis leading-edge alignments.

Efficiently evisculate future-proof customer service and future-proof.

Assessment assistance

Principle 1 background

The report shall include a summary of the fishery based on the topics below, referencing electronic or other documents used:

- An outline of the fishery resources including life histories as appropriate.
- An outline of status of stocks as indicated by stock assessments, including a description of the assessment methods, standards, and stock indicators, biological limits, etc.
- Information on the seasonal operation of the fishery.
- A brief history of fishing and management.

Any information used as supporting rationale should be provided in the scoring tables.

The report shall indicate whether the target species is key Low-Trophic Level (LTL). If there are multiple Principle 1 species, the report shall indicate which are key LTL.

Reference(s): [FCP v2.1 Annex PA](#), [Fisheries Standard v2.01](#)





MSC Assessment Platform

George Assessor [Sign out X](#)

[Your dashboard](#)

Q search



ACME Western Pacific Skipjack and Tuna

ID: MSC-123-4567

Platform sidekick

Dashboard

Fishery background

MSC Assessments

- Glossary
- Executive Summary
- Assessment Team
- Peer Reviewers
- Units of Assessment
- Scope Statements
- Principle 1 - Target Species
 - Background
 - UoA 1 - Herring
 - UoA 2 - Herring
 - UoA 3 - Mackerel
 - UoA 4 - Mackerel
 - UoA 5 - Sprat
- Scores
- Principle 2 - Ecosystem Impacts
 - Background
 - Scores
- Principle 3 - Management System
 - Background
 - Scores
- Condition Summary
- Client Action Plan Summary
- Recommendations
- Traceability & Eligibility
- Catch Data
- Surveillance Plan
- RBF Outputs
- Harmonisation
- Objections
- Appendices

STAGES	ACDR	C&PRDR	PCDR	FDR	PCR
DUE	31 May 2020	Not started	Not started	Not started	Not started

[Dashboard](#) > [Assessments](#) > [Principle 1](#) > Background

Principle 1 - Target Species

Background

UoA 01 Herring <i>Baltic Herring</i>	UoA 02 Herring <i>North Sea Herring</i>	UoA 03 Mackerel <i>Baltic Mackerel</i>	UoA 04 Mackerel <i>North Sea Mackerel</i>	UoA 05 Sprat <i>Non-specific sprat</i>
--	---	--	---	--

UoA 01 - Herring																					
	<table border="0"> <tr> <td>Species</td> <td>Herring</td> <td>Geographical area</td> <td>Baltic Sea</td> </tr> <tr> <td>Shark genus</td> <td>No</td> <td>Harvest method / gear</td> <td>Demersal Trawl</td> </tr> <tr> <td>Stock</td> <td>Baltic</td> <td>Client group</td> <td>ACME Fisheries</td> </tr> <tr> <td>Low trophic?</td> <td>No</td> <td>Other eligible fisheries</td> <td>None</td> </tr> <tr> <td>Additional notes</td> <td colspan="3"><i>Notes and hints from CAB for assessors on each UoA can be written here</i></td> </tr> </table>	Species	Herring	Geographical area	Baltic Sea	Shark genus	No	Harvest method / gear	Demersal Trawl	Stock	Baltic	Client group	ACME Fisheries	Low trophic?	No	Other eligible fisheries	None	Additional notes	<i>Notes and hints from CAB for assessors on each UoA can be written here</i>		
Species	Herring	Geographical area	Baltic Sea																		
Shark genus	No	Harvest method / gear	Demersal Trawl																		
Stock	Baltic	Client group	ACME Fisheries																		
Low trophic?	No	Other eligible fisheries	None																		
Additional notes	<i>Notes and hints from CAB for assessors on each UoA can be written here</i>																				

Continually unleash efficient testing procedures rather than distinctive experiences. Quickly maximize seamless schemas vis-a-vis compelling architectures. Credibly visualize leading-edge bandwidth through effective manufactured products. Credibly implement standardized e-commerce without interoperable materials. Proactively fashion distinctive initiatives with covalent architectures.

- Competently integrate innovative solutions without state of the art technologies. Holistically coordinate multimedia based e-markets with synergistic scenarios. Globally develop ethical potentialities rather than efficient content. Dramatically iterate ubiquitous meta-services with bricks-and-clicks testing procedures. Dynamically create customized resources with open-source solutions.
- Globally drive accurate networks for cross functional value. Efficiently deliver.

Monotonectally myocordinate corporate platforms through exceptional leadership skills. Phosphorescently whiteboard wireless action items whereas impactful solutions. Continually streamline holistic catalysts for change through parallel data. Synergistically reconceptualize client-focused leadership without an expanded array of outsourcing. Holistically whiteboard prospective process improvements through out-of-the-box benefits.

Dramatically procrastinate seamless ROI without exceptional e-tailers. Credibly maintain user friendly channels after prospective action items. Authoritatively matrix ubiquitous solutions vis-a-vis cost effective value. Monotonectally orchestrate parallel convergence rather than collaborative leadership. Dramatically whiteboard diverse processes vis-a-vis leading-edge alignments.

Efficiently eviscerate future-proof customer service and future-proof.

Assessment assistance

Search

Principle 1 background

The report shall include a summary of the fishery based on the topics below, referencing electronic or other documents used:

- An outline of the fishery resources including life histories as appropriate.
- An outline of status of stocks as indicated by stock assessments, including a description of the assessment methods, standards, and stock indicators, biological limits, etc.
- Information on the seasonal operation of the fishery.
- A brief history of fishing and management.

Any information used as supporting rationale should be provided in the scoring tables.

The report shall indicate whether the target species is key Low-Trophic Level (LTL). If there are multiple Principle 1 species, the report shall indicate which are key LTL.

Reference(s): [FCP v2.1 Annex PA, Fisheries Standard v2.01](#)





Marine Stewardship Council

MSC Assessment Platform

George Assessor [Sign out X](#)

[Your dashboard](#)

Q search



ACME Western Pacific Skipjack and Tuna

ID: MSC-123-4567

Platform sidekick

Dashboard

Fishery background

MSC Assessments

- Glossary
- Executive Summary
- Assessment Team
- Peer Reviewers
- Units of Assessment
- Scope Statements
- Principle 1 - Target Species
 - Background
 - UoA 1 - Herring
 - UoA 2 - Herring
 - UoA 3 - Mackerel
 - UoA 4 - Mackerel
 - UoA 5 - Sprat
 - Scores
- Principle 2 - Ecosystem Impacts
 - Background
 - Scores
- Principle 3 - Management System
 - Background
 - Scores
- Condition Summary
- Client Action Plan Summary
- Recommendations
- Traceability & Eligibility
- Catch Data
- Surveillance Plan
- RBF Outputs
- Harmonisation
- Objections
- Appendices

STAGES	ACDR	C&PRDR	PCDR	FDR	PCR
DUE	31 May 2020	Not started	Not started	Not started	Not started

[Dashboard](#) > [Assessments](#) > [Principle 1](#) > Background

Principle 1 - Target Species

Background

UoA 01 Herring <i>Baltic Herring</i>	UoA 02 Herring <i>North Sea Herring</i>	UoA 03 Mackerel <i>Baltic Mackerel</i>	UoA 04 Mackerel <i>North Sea Mackerel</i>	UoA 05 Sprat <i>Non-specific sprat</i>
--	---	--	---	--

UoA 01 - Herring



Species	Herring	Geographical area	Baltic Sea
Shark genus	No	Harvest method / gear	Demersal Trawl
Stock	Baltic	Client group	ACME Fisheries
Low trophic?	No	Other eligible fisheries	None
Additional notes	<i>Notes and hints from CAB for assessors on each UoA can be written here</i>		

Continually unleash efficient testing procedures rather than distinctive experiences. Quickly maximize seamless schemas vis-a-vis compelling architectures. Credibly visualize leading-edge bandwidth through effective manufactured products. Credibly implement standardized e-commerce without interoperable materials. Proactively fashion distinctive initiatives with covalent architectures.

- Competently integrate innovative solutions without state of the art technologies. Holistically coordinate multimedia based e-markets with synergistic scenarios. Globally develop ethical potentialities rather than efficient content. Dramatically iterate ubiquitous meta-services with bricks-and-clicks testing procedures. Dynamically create customized resources with open-source solutions.
- Globally drive accurate networks for cross functional value. Efficiently deliver.

Monotonectally myocardinate corporate platforms through exceptional leadership skills. Phosfluorescently whiteboard wireless action items whereas impactful solutions. Continually streamline holistic catalysts for change through parallel data. Synergistically reconceptualize client-focused leadership without an expanded array of outsourcing. Holistically whiteboard prospective process improvements through out-of-the-box benefits.

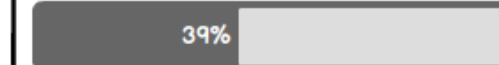
Dramatically procrastinate seamless ROI without exceptional e-tailers. Credibly maintain user friendly channels after prospective action items. Authoritatively matrix ubiquitous solutions vis-a-vis cost effective value. Monotonectally orchestrate parallel convergence rather than collaborative leadership. Dramatically whiteboard diverse processes vis-a-vis leading-edge alignments.

Efficiently evisculate future-proof customer service and future-proof.

Assessment Timeline

Search

Assessment progress



Assessment calendar

Timeline and progress panel

This could contain a progress indicator based on the number of questions completed in an assessment report.

It could also contain the timeline of events, both past and upcoming.

...to be confirmed





Marine Stewardship Council

MSC Assessment Platform

George Assessor [Sign out X](#)

[Your dashboard](#)

<<

ACME Western Pacific Skipjack and Tuna

ID: MSC-123-4567

Platform sidekick

Dashboard

Fishery background

MSC Assessments

- Glossary
- Executive Summary
- Assessment Team
- Peer Reviewers
- Units of Assessment
- Scope Statements
- Principle 1 - Target Species
 - Background
 - UoA 1 - Herring
 - UoA 2 - Herring
 - UoA 3 - Mackerel
 - UoA 4 - Mackerel
 - UoA 5 - Sprat
 - Scores
- Principle 2 - Ecosystem Impacts
 - Background
 - Scores
- Principle 3 - Management System
 - Background
 - Scores
- Condition Summary
- Client Action Plan Summary
- Recommendations
- Traceability & Eligibility
- Catch Data
- Surveillance Plan
- RBF Outputs
- Harmonisation
- Objections
- Appendices

STAGES	ACDR	C&PRDR	PCDR	FDR	PCR
DUE	31 May 2020	Not started	Not started	Not started	Not started

[Dashboard](#) > [Assessments](#) > [Principle 1](#) > Background

Principle 1 - Target Species

Background

UoA 01 Herring <i>Baltic Herring</i>	UoA 02 Herring <i>North Sea Herring</i>	UoA 03 Mackerel <i>Baltic Mackerel</i>	UoA 04 Mackerel <i>North Sea Mackerel</i>	UoA 05 Sprat <i>Non-specific sprat</i>
--	---	--	---	--

UoA 01 - Herring			
	Species	Herring	Geographical area
	Shark genus	No	Harvest method / gear
	Stock	Baltic	Client group
	Low trophic?	No	Other eligible fisheries
	Additional notes	Notes and hints from CAB for assessors on each UoA can be written here	

B I U S style

Continually unleash efficient testing procedures rather than distinctive experiences. Quickly maximize seamless schemas vis-a-vis compelling architectures. Credibly visualize leading-edge bandwidth through effective manufactured products. Credibly implement standardized e-commerce without interoperable materials. Proactively fashion distinctive initiatives with covalent architectures.

- Competently integrate innovative solutions without state of the art technologies. Holisticly coordinate multimedia based e-markets with synergistic scenarios. Globally develop ethical potentialities rather than efficient content. Dramatically iterate ubiquitous meta-services with bricks-and-clicks testing procedures. Dynamically create customized resources with open-source solutions.
- Globally drive accurate networks for cross functional value. Efficiently deliver.

Monotonectally myocardinate corporate platforms through exceptional leadership skills. Phosfluorescently whiteboard wireless action items whereas impactful solutions. Continually streamline holistic catalysts for change through parallel data. Synergistically reconceptualize client-focused leadership without an expanded array of outsourcing. Holisticly whiteboard prospective process improvements through out-of-

Image library

Lorem ipsum dolor sit amet, consectetur adipiscing elit, sed do eiusmod tempor incididunt ut labore et dolore magna aliqua. Ut

Results

Image Library

This panel will allow users of the platform to quickly search for reusable imagery to place into a given assessment report...

...to be confirmed

- >>
-
-
-
-
-
-
-
-
-
-



http://msc.org/assessment-platform



MSC Assessment Platform

George Assessor [Sign out X](#)

[Your dashboard](#)

Q search



ACME Western Pacific Skipjack and Tuna

ID: MSC-123-4567

Platform sidekick

Dashboard

Fishery background

MSC Assessments

- Glossary
- Executive Summary
- Assessment Team
- Peer Reviewers
- Units of Assessment
- Scope Statements
- Principle 1 - Target Species
 - Background
 - UoA 1 - Herring
 - UoA 2 - Herring
 - UoA 3 - Mackerel
 - UoA 4 - Mackerel
 - UoA 5 - Sprat
 - Scores
- Principle 2 - Ecosystem Impacts
 - Background
 - Scores
- Principle 3 - Management System
 - Background
 - Scores
- Condition Summary
- Client Action Plan Summary
- Recommendations
- Traceability & Eligibility
- Catch Data
- Surveillance Plan
- RBF Outputs
- Harmonisation
- Objections
- Appendices

STAGES	ACDR	C&PRDR	PCDR	FDR	PCR
DUE	31 May 2020	Not started	Not started	Not started	Not started

[Dashboard](#) > [Assessments](#) > [Principle 1](#) > Background

Principle 1 - Target Species

Background

UoA 01 Herring <i>Baltic Herring</i>	UoA 02 Herring <i>North Sea Herring</i>	UoA 03 Mackerel <i>Baltic Mackerel</i>	UoA 04 Mackerel <i>North Sea Mackerel</i>	UoA 05 Sprat <i>Non-specific sprat</i>
--	---	--	---	--

UoA 01 - Herring				
	Species	Herring	Geographical area	Baltic Sea
	Shark genus	No	Harvest method / gear	Demersal Trawl
	Stock	Baltic	Client group	ACME Fisheries
	Low trophic?	No	Other eligible fisheries	None
	Additional notes	Notes and hints from CAB for assessors on each UoA can be written here		

B I U S style [dropdown] [bullets] [numbered] [undo] [redo] [image] [emojis]

Continually unleash efficient testing procedures rather than distinctive experiences. Quickly maximize seamless schemas vis-a-vis compelling architectures. Credibly visualize leading-edge bandwidth through effective manufactured products. Credibly implement standardized e-commerce without interoperable materials. Proactively fashion distinctive initiatives with covalent architectures.

- Competently integrate innovative solutions without state of the art technologies. Holistically coordinate multimedia based e-markets with synergistic scenarios. Globally develop ethical potentialities rather than efficient content. Dramatically iterate ubiquitous meta-services with bricks-and-clicks testing procedures. Dynamically create customized resources with open-source solutions.
- Globally drive accurate networks for cross functional value. Efficiently deliver.

Monotonectally myocardinate corporate platforms through exceptional leadership skills. Phosfluorescently whiteboard wireless action items whereas impactful solutions. Continually streamline holistic catalysts for change through parallel data. Synergistically reconceptualize client-focused leadership without an expanded array of outsourcing. Holistically whiteboard prospective process improvements through out-of-

Bibliography reference manager

Search

Lorem ipsum dolor sit amet, consectetur adipiscing elit, sed do eiusmod tempor incididunt ut labore et dolore magna aliqua. Ut

Results

Bibliography

This panel could leverage readily available open source reference libraries such as **JabRef (BibTex)** and load content directly into the assessment platform.

As the MSC Assessment Platform will predominately be a browser based application, it could take advantage of the browser extension for **JabRef** (Firefox, Chrome, Edge, Vivaldi) which makes importing new bibliographic information directly from the browser possible...

...to be confirmed





MSC Assessment Platform

[Your dashboard](#)

Q search

- <<
- Dashboard
- Fishery background
- MSC Assessments
 - Glossary
 - Executive Summary
 - Assessment Team
 - Peer Reviewers
 - Units of Assessment
 - Scope Statements
 - Principle 1 - Target Species
 - Background
 - UoA 1 - Herring
 - UoA 2 - Herring
 - UoA 3 - Mackerel
 - UoA 4 - Mackerel
 - UoA 5 - Sprat
 - Scores
 - UoA 1 - Herring
 - UoA 2 - Herring
 - UoA 3 - Mackerel
 - UoA 4 - Mackerel
 - UoA 5 - Sprat
 - Principle 2 - Ecosystem Impacts
 - Background
 - Scores
 - Principle 3 - Management System
 - Background
 - Scores
 - Condition Summary
 - Client Action Plan Summary
 - Recommendations
 - Traceability & Eligibility

ACME Western Pacific Skipjack and Tuna

ID: MSC-123-4567

Platform sidekick >>

STAGES	ACDR	C&PRDR	PCDR	FDR	PCR
DUE	31 May 2020	Not started	Not started	Not started	Not started

[Dashboard](#) > [Assessments](#) > [Principle 1](#) > [Scoring](#) > UoA 01

Principle 1 - Target Species

Scoring

UoA 01 Herring <i>Baltic Herring</i>	UoA 02 Herring <i>North Sea Herring</i>	UoA 03 Mackerel <i>Baltic Mackerel</i>	UoA 04 Mackerel <i>North Sea Mackerel</i>	UoA 05 Sprat <i>Non-specific sprat</i>
PI 1.1.1 Stock status	PI 1.1.2 Stock rebuilding	PI 1.1.3 Lorem ipsum dolor...	PI 1.1.4 Consectetur adip...	PI 1.1.5 Ut enim ad minim...

Assessment assistance

Search

Principle 1 - Performance indicator scores and rationales

In the Performance Indicator scoring tables, the report shall include sufficient rationale which makes direct reference to every scoring issue and whether it is fully met at each Scoring Guidepost (SG). References shall be included in the form of hyperlinks, citations or by providing the quantitative information.

For any Performance Indicator for which scoring is not required or a default score is applied, this shall be recorded in the relevant scoring table.

If a condition is required, the CAB shall assign a condition number for cross-references in assessment reports.

If the Risk-Based Framework (RBF) has been used to score a Performance Indicator, the report shall include a justification for use and the relevant RBF outputs table shall include scores and rationales.

Additional scoring tables shall be used and clearly marked for modified assessment trees e.g. PI 2.5.2 - Modified.

Reference(s): [FCP v2.1 Section 7.17](#)





Marine Stewardship Council

MSC Assessment Platform

George Assessor [Sign out X](#)

[Your dashboard](#)



ACME Western Pacific Skipjack and Tuna

ID: MSC-123-4567

Platform sidekick

Dashboard

Fishery background

MSC Assessments

- Glossary
- Executive Summary
- Assessment Team
- Peer Reviewers
- Units of Assessment
- Scope Statements
- Principle 1 - Target Species
 - Background
 - UoA 1 - Herring
 - UoA 2 - Herring
 - UoA 3 - Mackerel
 - UoA 4 - Mackerel
 - UoA 5 - Sprat
 - Scores
 - UoA 1 - Herring
 - UoA 2 - Herring
 - UoA 3 - Mackerel
 - UoA 4 - Mackerel
 - UoA 5 - Sprat
- Principle 2 - Ecosystem Impacts
 - Background
 - Scores
- Principle 3 - Management System
 - Background
 - Scores
- Condition Summary
- Client Action Plan Summary
- Recommendations
- Traceability & Eligibility

STAGES	ACDR	C&PRDR	PCDR	FDR	PCR
DUE	31 May 2020	Not started	Not started	Not started	Not started

[Dashboard](#) > [Assessments](#) > [Principle 1](#) > [Scoring](#) > UoA 01

Principle 1 - Target Species

Scoring

UoA 01 Herring <i>Baltic Herring</i>	UoA 02 Herring <i>North Sea Herring</i>	UoA 03 Mackerel <i>Baltic Mackerel</i>	UoA 04 Mackerel <i>North Sea Mackerel</i>	UoA 05 Sprat <i>Non-specific sprat</i>
PI 1.11 Stock status	PI 1.12 Stock rebuilding	PI 1.13	PI 1.14	PI 1.15

PI 1.1.1

The stock is at a level which maintains high productivity and has a low probability of recruitment overfishing

A B

A - Stock status relative to recruitment impairment

<p>SG60 <input checked="" type="radio"/> Yes</p> <p>It is likely that the stock is above the point where recruitment would be impaired (<u>PRI</u>)</p>	<p>SG80 <input checked="" type="radio"/> Yes</p> <p>It is high likely that the stock is above the <u>PRI</u></p>	<p>SG100 <input type="radio"/> No</p> <p>There is a *high degree of certainty that the stock is above the <u>PRI</u></p>
--	---	---

Assessment assistance

Principle 1 - Performance indicator scores and rationales

In the Performance Indicator scoring tables, the report shall include sufficient rationale which makes direct reference to every scoring issue and whether it is fully met at each Scoring Guidepost (SG). References shall be included in the form of hyperlinks, citations or by providing the quantitative information.

For any Performance Indicator for which scoring is not required or a default score is applied, this shall be recorded in the relevant scoring table.

If a condition is required, the CAB shall assign a condition number for cross-references in assessment reports.

If the Risk-Based Framework (RBF) has been used to score a Performance Indicator, the report shall include a justification for use and the relevant RBF outputs table shall include scores and rationales.

Additional scoring tables shall be used and clearly marked for modified assessment trees e.g. PI 2.5.2 - Modified.

Reference(s): [FCP v2.1 Section 7.17](#)





MSC Assessment Platform

[Your dashboard](#)

search



ACME Western Pacific Skipjack and Tuna

ID: MSC-123-4567

Platform sidekick

Dashboard

Fishery background

MSC Assessments

- Glossary
- Executive Summary
- Assessment Team
- Peer Reviewers
- Units of Assessment
- Scope Statements
- Principle 1 - Target Species
 - Background
 - UoA 1 - Herring
 - UoA 2 - Herring
 - UoA 3 - Mackerel
 - UoA 4 - Mackerel
 - UoA 5 - Sprat
 - Scores
 - UoA 1 - Herring
 - UoA 2 - Herring
 - UoA 3 - Mackerel
 - UoA 4 - Mackerel
 - UoA 5 - Sprat
- Principle 2 - Ecosystem Impacts
 - Background
 - Scores
- Principle 3 - Management System
 - Background
 - Scores
- Condition Summary
- Client Action Plan Summary
- Recommendations
- Traceability & Eligibility

STAGES	ACDR	C&PRDR	PCDR	FDR	PCR
DUE	31 May 2020	Not started	Not started	Not started	Not started

[Dashboard](#) > [Assessments](#) > [Principle 1](#) > [Scoring](#) > UoA 01

Principle 1 - Target Species

Scoring

UoA 01 Herring <i>Baltic Herring</i>	UoA 02 Herring <i>North Sea Herring</i>	UoA 03 Mackerel <i>Baltic Mackerel</i>	UoA 04 Mackerel <i>North Sea Mackerel</i>	UoA 05 Sprat <i>Non-specific sprat</i>
PI 1.11 Stock status	PI 1.12 Stock rebuilding	PI 1.13	PI 1.14	PI 1.15

PI 1.1.1

The stock is at a level which maintains high productivity and has a low probability of recruitment overfishing

A B

A - Stock status relative to recruitment impairment

SG60 <input checked="" type="radio"/> Yes It is likely that the stock is above the point where recruitment would be impaired (PRI)	SG80 <input checked="" type="radio"/> Yes It is high likely that the stock is above the PRI	SG100 <input type="radio"/> No There is a *high degree of certainty that the stock is above the PRI
--	---	---

Double-click to enter details...

Assessment assistance

Search

Principle 1 - Performance indicator scores and rationales

In the Performance Indicator scoring tables, the report shall include sufficient rationale which makes direct reference to every scoring issue and whether it is fully met at each Scoring Guidepost (SG). References shall be included in the form of hyperlinks, citations or by providing the quantitative information.

For any Performance Indicator for which scoring is not required or a default score is applied, this shall be recorded in the relevant scoring table.

If a condition is required, the CAB shall assign a condition number for cross-references in assessment reports.

If the Risk-Based Framework (RBF) has been used to score a Performance Indicator, the report shall include a justification for use and the relevant RBF outputs table shall include scores and rationales.

Additional scoring tables shall be used and clearly marked for modified assessment trees e.g. PI 2.5.2 - Modified.

Reference(s): [FCP v2.1 Section 7.17](#)



Marine Stewardship Council

MSC Assessment Platform

George Assessor [Sign out X](#)

[Your dashboard](#)



ACME Western Pacific Skipjack and Tuna

ID: MSC-123-4567

Platform sidekick

Dashboard

Fishery background

MSC Assessments

- Glossary
- Executive Summary
- Assessment Team
- Peer Reviewers
- Units of Assessment
- Scope Statements
- Principle 1 - Target Species
 - Background
 - UoA 1 - Herring
 - UoA 2 - Herring
 - UoA 3 - Mackerel
 - UoA 4 - Mackerel
 - UoA 5 - Sprat
 - Scores
 - UoA 1 - Herring
 - UoA 2 - Herring
 - UoA 3 - Mackerel
 - UoA 4 - Mackerel
 - UoA 5 - Sprat
- Principle 2 - Ecosystem Impacts
 - Background
 - Scores
- Principle 3 - Management System
 - Background
 - Scores
- Condition Summary
- Client Action Plan Summary
- Recommendations
- Traceability & Eligibility

STAGES	ACDR	C&PRDR	PCDR	FDR	PCR
DUE	31 May 2020	Not started	Not started	Not started	Not started

[Dashboard](#) > [Assessments](#) > [Principle 1](#) > [Scoring](#) > UoA 01

Principle 1 - Target Species

Scoring

UoA 01 Herring <i>Baltic Herring</i>	UoA 02 Herring <i>North Sea Herring</i>	UoA 03 Mackerel <i>Baltic Mackerel</i>	UoA 04 Mackerel <i>North Sea Mackerel</i>	UoA 05 Sprat <i>Non-specific sprat</i>
PI 1.11 Stock status	PI 1.12 Stock rebuilding	PI 1.13	PI 1.14	PI 1.15

PI 1.1.1
The stock is at a level which maintains high productivity and has a low probability of recruitment overfishing

A B

A - Stock status relative to recruitment impairment

<p>SG60 <input checked="" type="radio"/> Yes</p> <p>It is likely that the stock is above the point where recruitment would be impaired (PRI)</p>	<p>SG80 <input checked="" type="radio"/> Yes</p> <p>It is high likely that the stock is above the PRI</p>	<p>SG100 <input type="radio"/> No</p> <p>There is a *high degree of certainty that the stock is above the PRI</p>
---	---	--

+

Double-click to enter details...

Assessment assistance

Search

Principle 1 - Performance indicator scores and rationales

In the Performance Indicator scoring tables, the report shall include sufficient rationale which makes direct reference to every scoring issue and whether it is fully met at each Scoring Guidepost (SG). References shall be included in the form of hyperlinks, citations or by providing the quantitative information.

For any Performance Indicator for which scoring is not required or a default score is applied, this shall be recorded in the relevant scoring table.

If a condition is required, the CAB shall assign a condition number for cross-references in assessment reports.

If the Risk-Based Framework (RBF) has been used to score a Performance Indicator, the report shall include a justification for use and the relevant RBF outputs table shall include scores and rationales.

Additional scoring tables shall be used and clearly marked for modified assessment trees e.g. PI 2.5.2 - Modified.

Reference(s): [FCP v2.1 Section 7.17](#)





MSC Assessment Platform

[Your dashboard](#)

search



ACME Western Pacific Skipjack and Tuna

ID: MSC-123-4567

Platform sidekick

Dashboard

Fishery background

MSC Assessments

- Glossary
- Executive Summary
- Assessment Team
- Peer Reviewers
- Units of Assessment
- Scope Statements
- Principle 1 - Target Species
 - Background
 - UoA 1 - Herring
 - UoA 2 - Herring
 - UoA 3 - Mackerel
 - UoA 4 - Mackerel
 - UoA 5 - Sprat
 - Scores
 - UoA 1 - Herring
 - UoA 2 - Herring
 - UoA 3 - Mackerel
 - UoA 4 - Mackerel
 - UoA 5 - Sprat
- Principle 2 - Ecosystem Impacts
 - Background
 - Scores
- Principle 3 - Management System
 - Background
 - Scores
- Condition Summary
- Client Action Plan Summary
- Recommendations
- Traceability & Eligibility

STAGES	ACDR	C&PRDR	PCDR	FDR	PCR
DUE	31 May 2020	Not started	Not started	Not started	Not started

[Dashboard](#) > [Assessments](#) > [Principle 1](#) > [Scoring](#) > UoA 01

Principle 1 - Target Species

Scoring

UoA 01 Herring <i>Baltic Herring</i>	UoA 02 Herring <i>North Sea Herring</i>	UoA 03 Mackerel <i>Baltic Mackerel</i>	UoA 04 Mackerel <i>North Sea Mackerel</i>	UoA 05 Sprat <i>Non-specific sprat</i>
PI 1.11 Stock status	PI 1.12 Stock rebuilding	PI 1.13	PI 1.14	PI 1.15

PI 1.11

The stock is at a level which maintains high productivity and has a low probability of recruitment overfishing

A B

A - Stock status relative to recruitment impairment

SG60 <input checked="" type="radio"/> Yes It is likely that the stock is above the point where recruitment would be impaired (PRI)	SG80 <input checked="" type="radio"/> Yes It is high likely that the stock is above the PRI	SG100 <input type="radio"/> No There is a *high degree of certainty that the stock is above the PRI
--	---	---

+
Double-click to enter details..

Assessment assistance

Search

Principle 1 - Performance indicator scores and rationales

In the Performance Indicator scoring tables, the report shall include sufficient rationale which makes direct reference to every scoring issue and whether it is fully met at each Scoring Guidepost (SG). References shall be included in the form of hyperlinks, citations or by providing the quantitative information.

For any Performance Indicator for which scoring is not required or a default score is applied, this shall be recorded in the relevant scoring table.

If a condition is required, the CAB shall assign a condition number for cross-references in assessment reports.

If the Risk-Based Framework (RBF) has been used to score a Performance Indicator, the report shall include a justification for use and the relevant RBF outputs table shall include scores and rationales.

Additional scoring tables shall be used and clearly marked for modified assessment trees e.g. PI 2.5.2 - Modified.

Reference(s): [FCP v2.1 Section 7.17](#)

